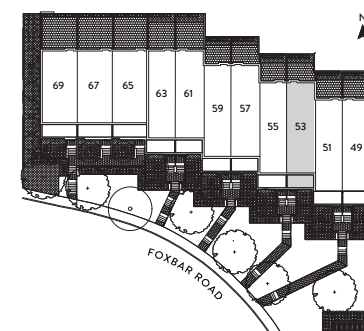
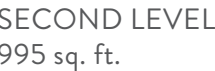
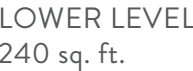


INCLUDING BASEMENT 240 SQ. FT.

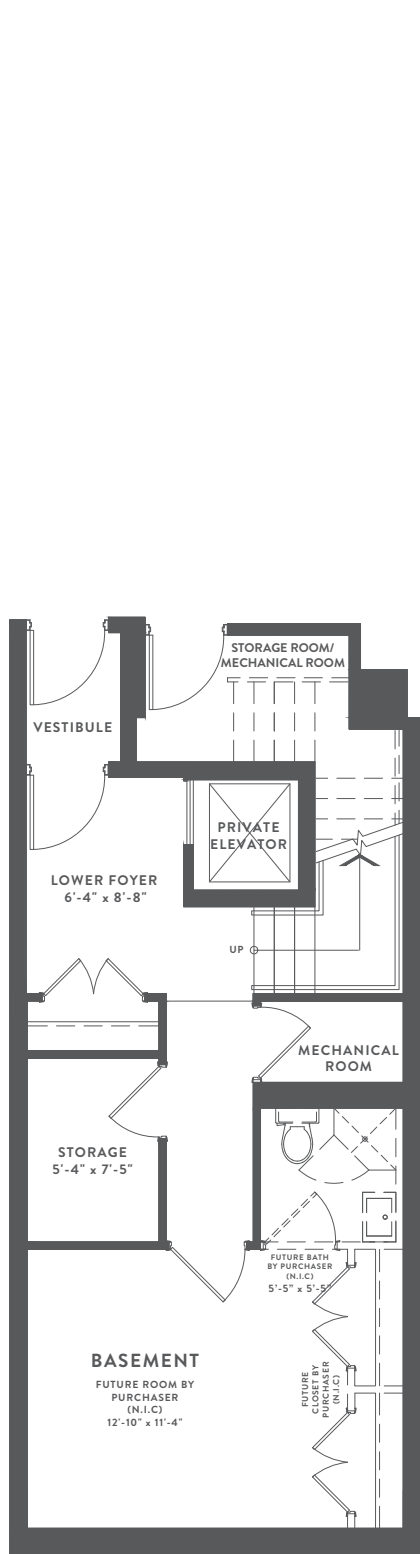


# 61 FOXBAR ROAD

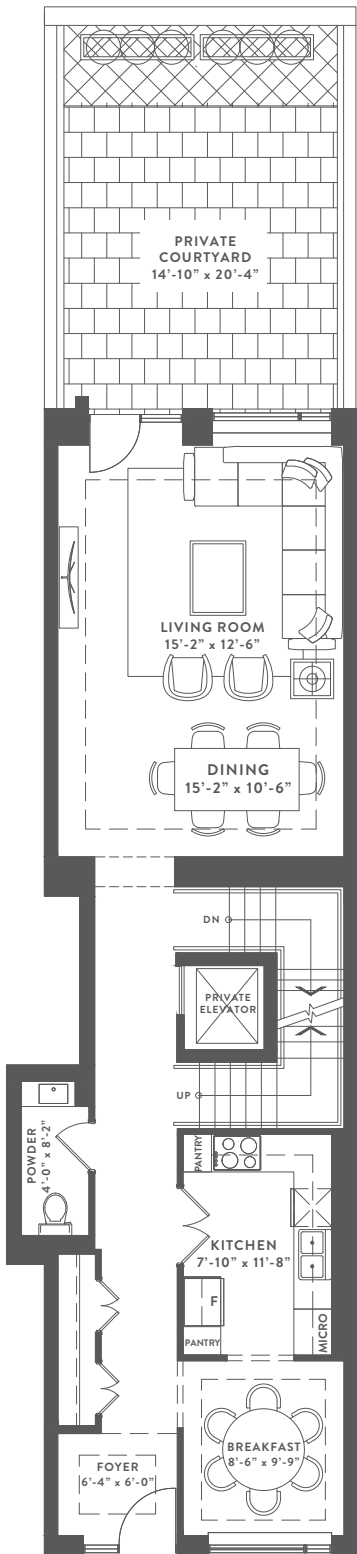
3 BEDROOM | 3 BATHROOM | BACKYARD TERRACE

2,995 SQ. FT.

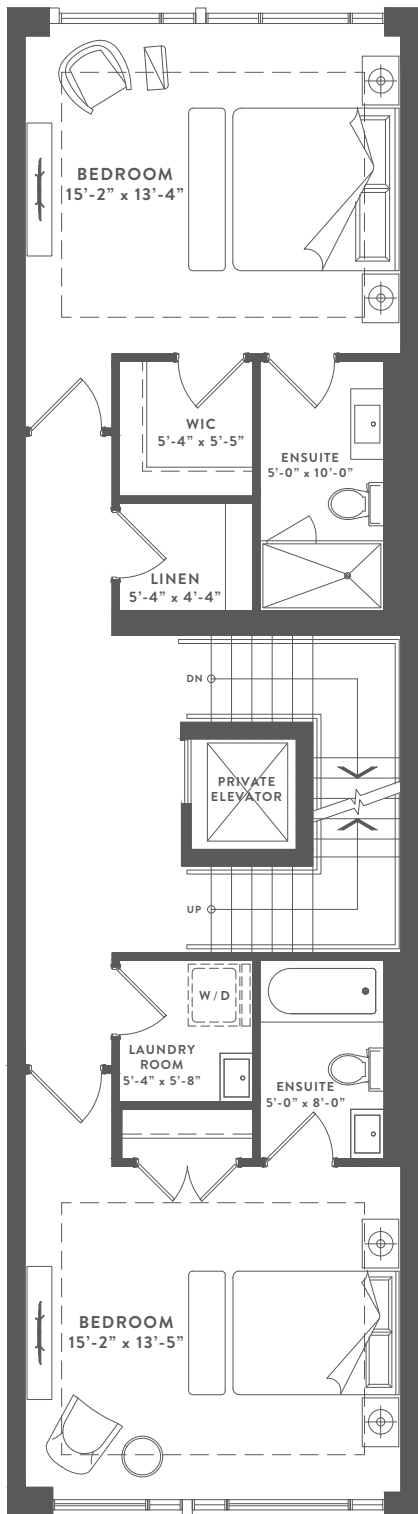
INCLUDING BASEMENT 220 SQ.FT.



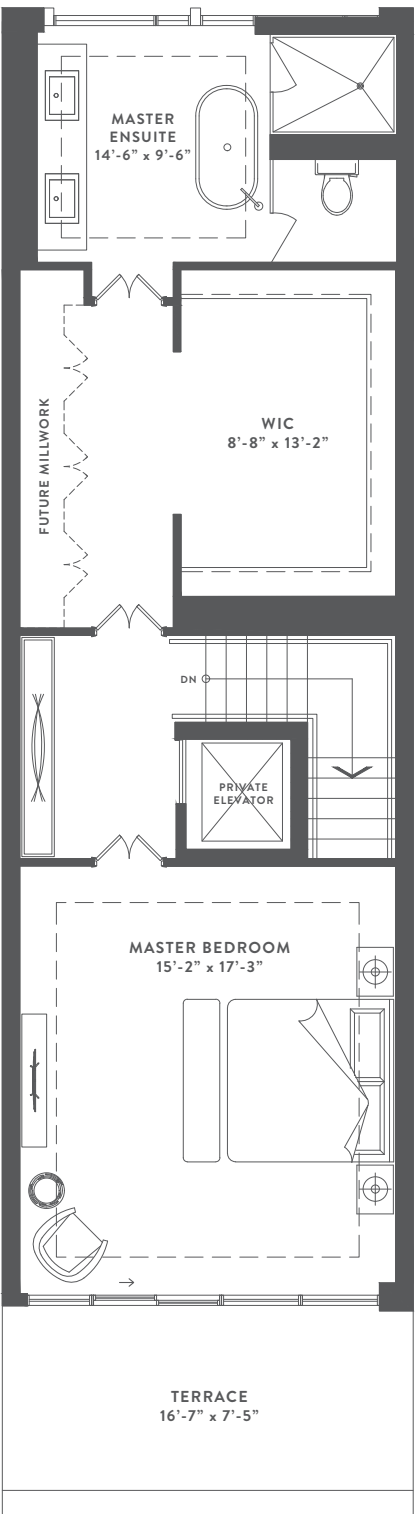
LOWER LEVEL  
220 sq. ft.



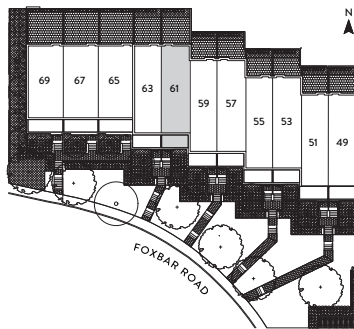
GROUND LEVEL  
970 sq. ft.



SECOND LEVEL  
970 sq. ft.



THIRD LEVEL  
835 sq. ft.

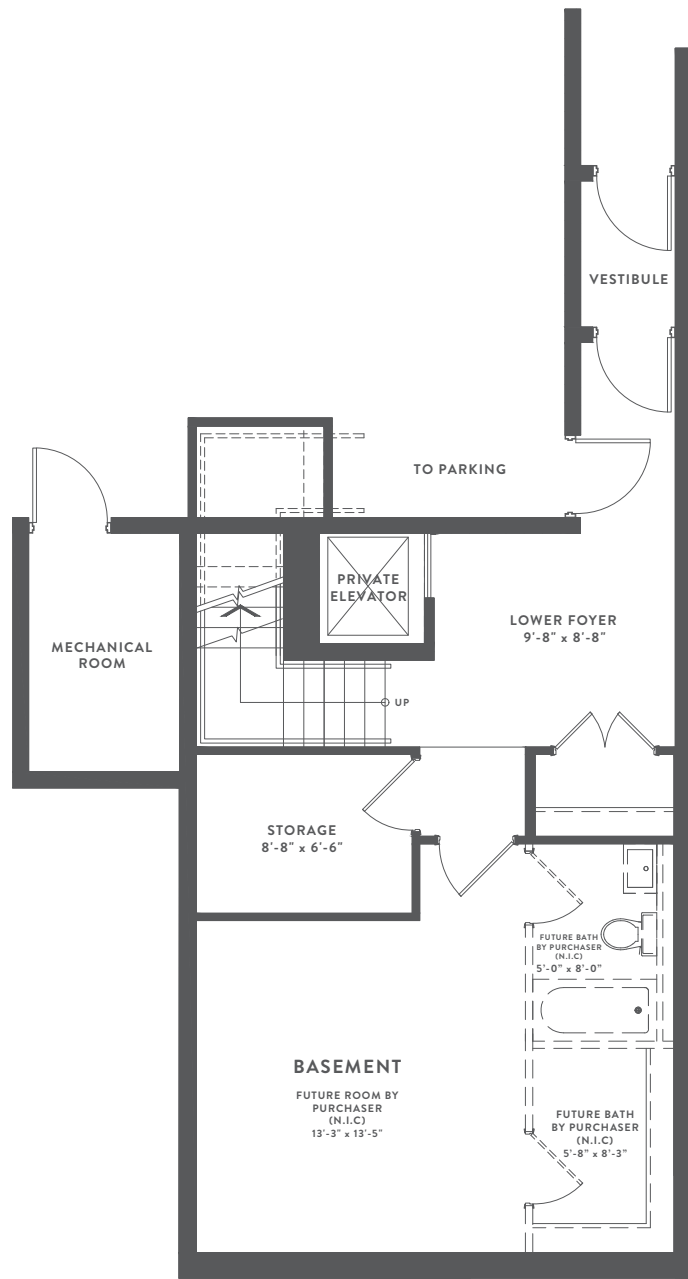


# 69 FOXBAR ROAD

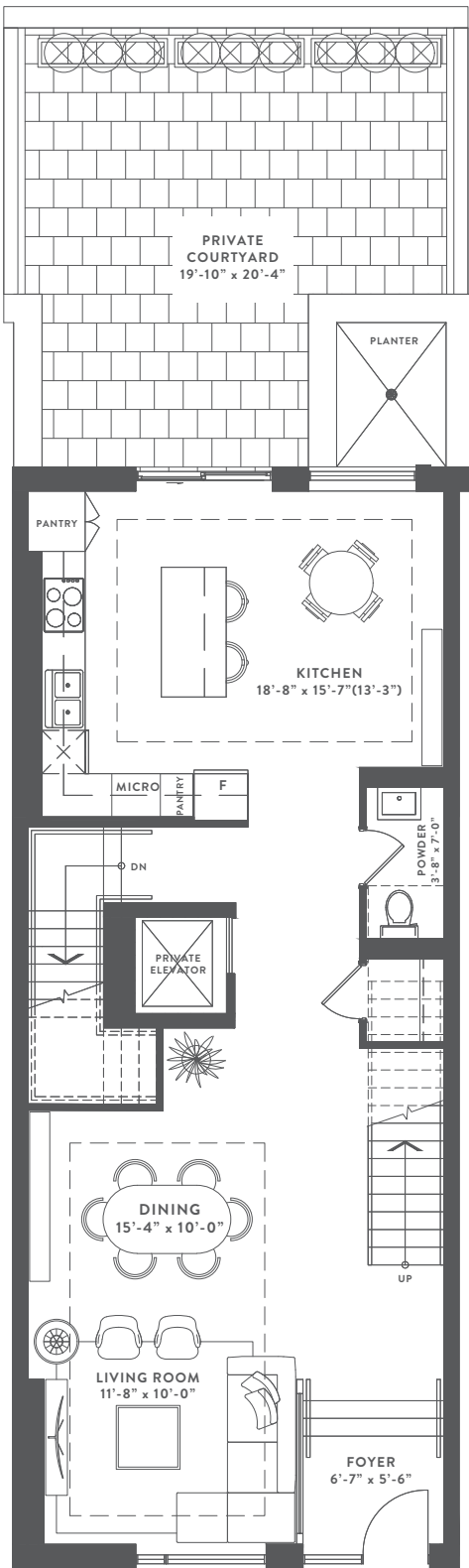
3 BEDROOM | 3 BATHROOM | BACKYARD TERRACE

3,160 SQ. FT.

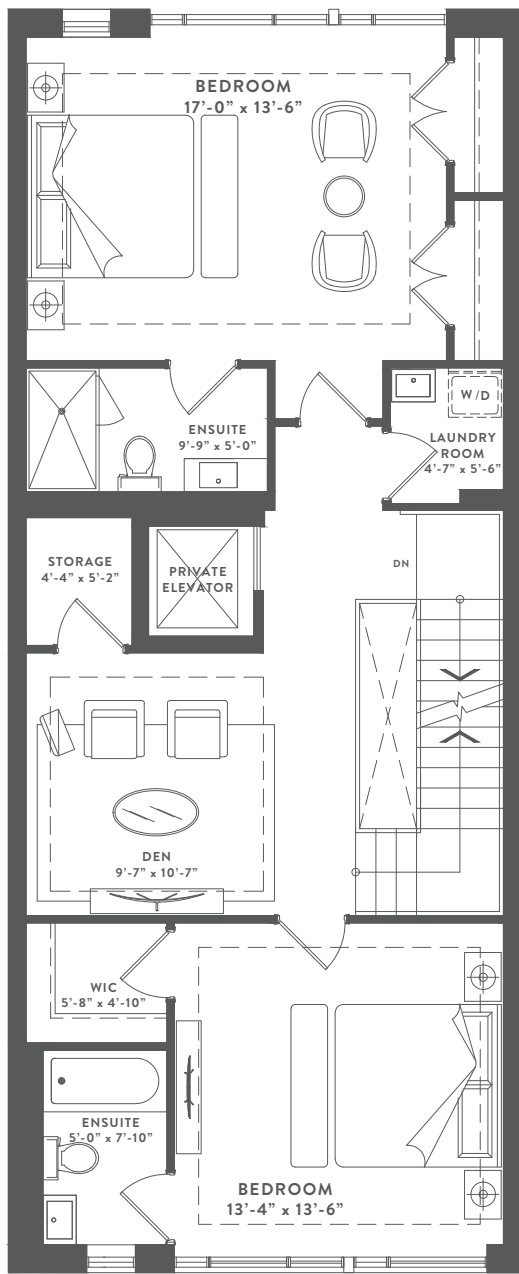
INCLUDING BASEMENT 265 SQ. FT.



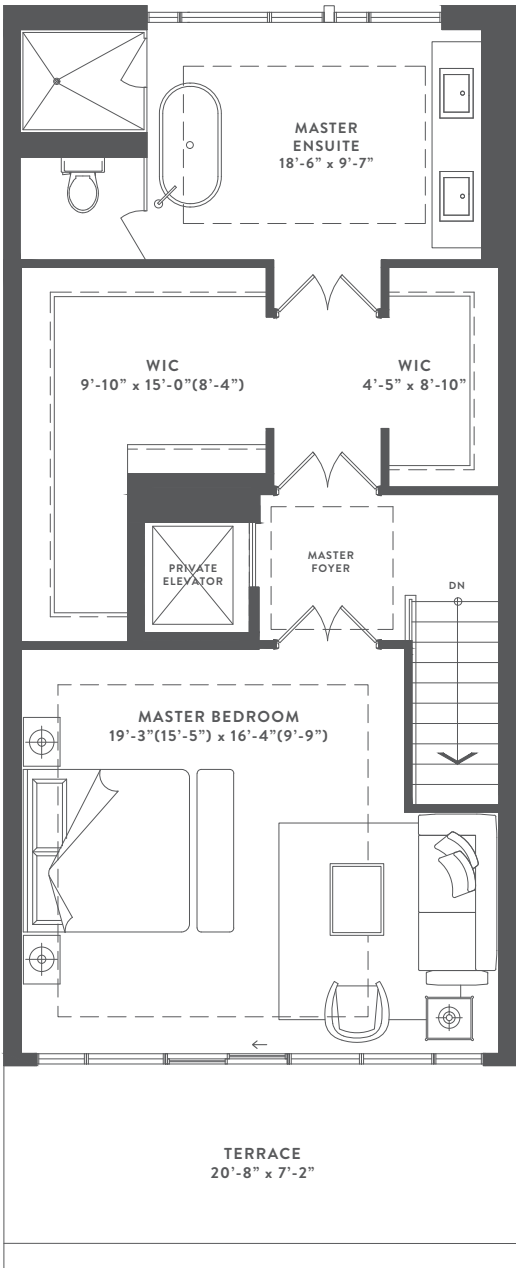
LOWER LEVEL  
265 sq. ft.



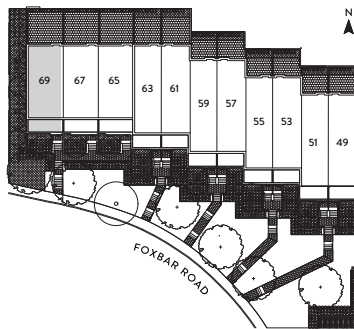
GROUND LEVEL  
1020 sq. ft.



SECOND LEVEL  
1020 sq. ft.

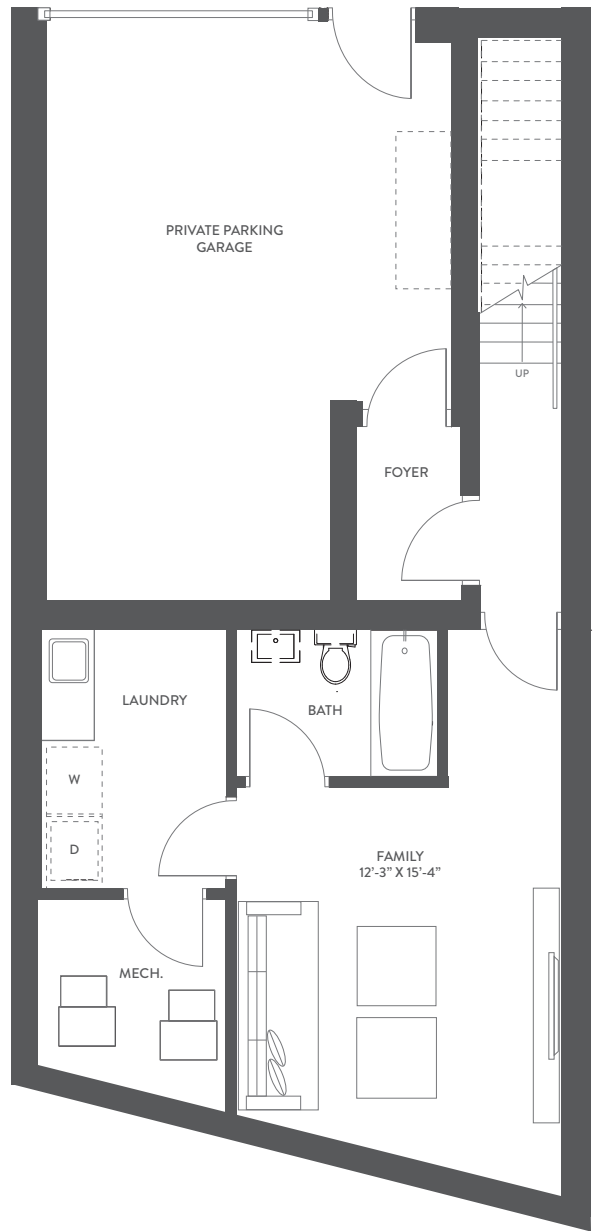


THIRD LEVEL  
855 sq. ft.

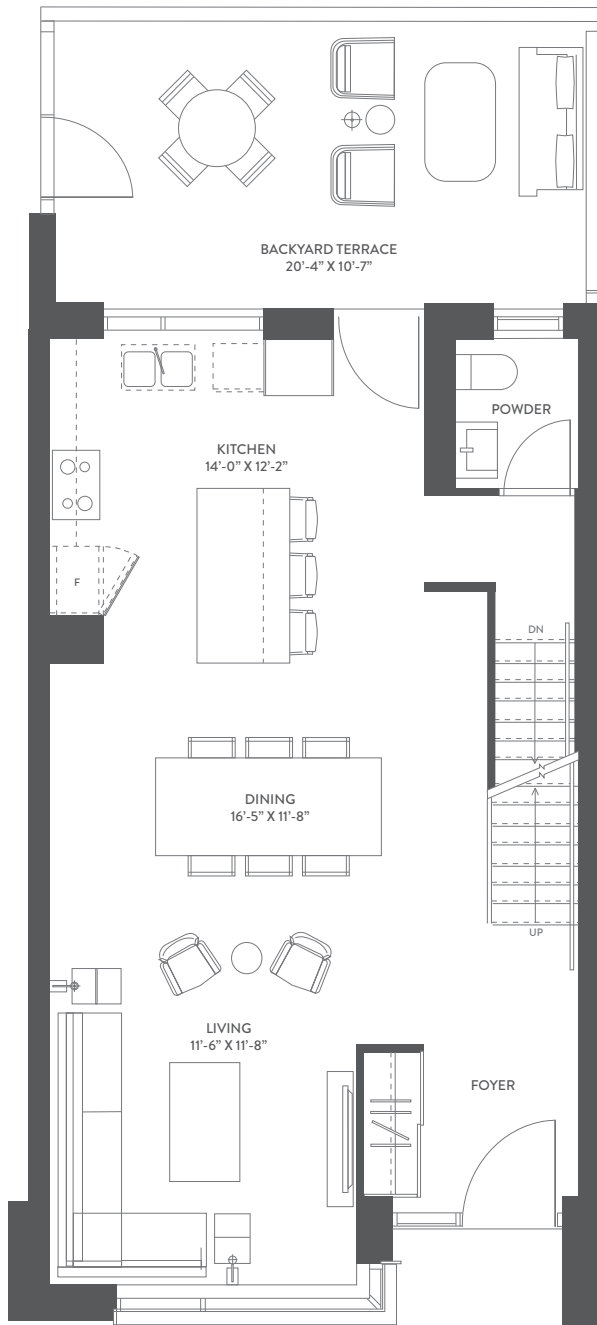


# 79 FOXBAR ROAD

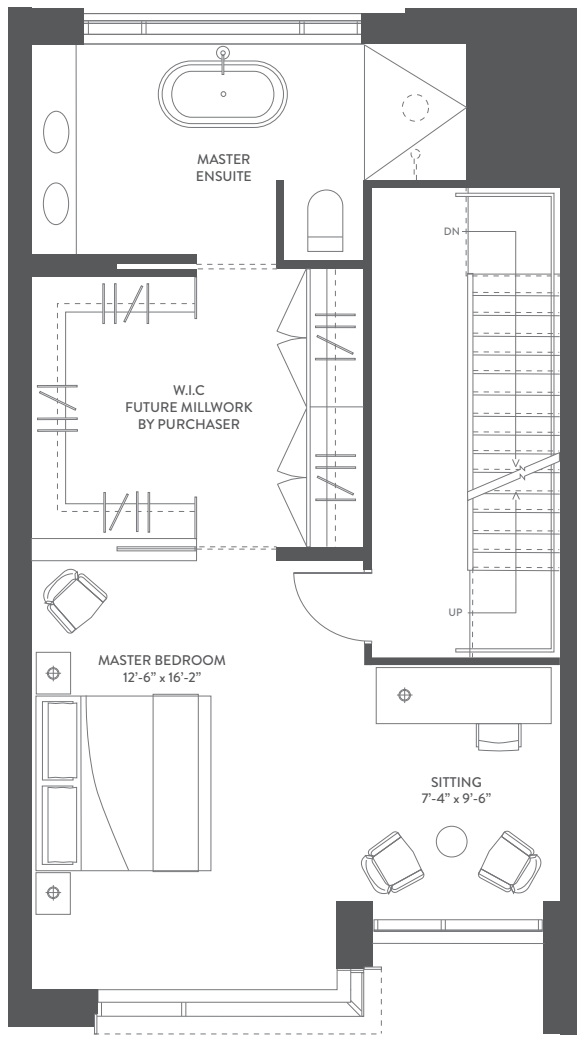
3 BEDROOM | BACKYARD TERRACE  
2,905 SQ. FT.



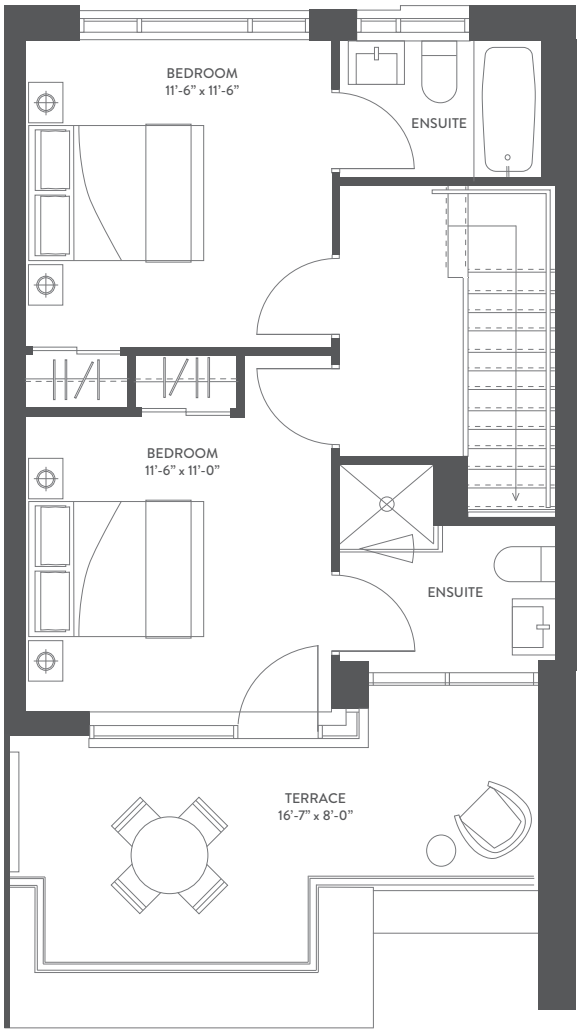
LOWER LEVEL  
780 sq. ft.



GROUND LEVEL  
780 sq. ft.



SECOND LEVEL  
770 sq. ft.



THIRD LEVEL  
575 sq. ft.



Dimensions, specifications, layouts (including but not limited to tile patterns), window sizes, mullions, fixture representation, appliance and fixture locations, and materials are approximate only, may vary, and are subject to changes without notice as provided in the Agreement of Purchase and Sale. Plans may be reversed. Wall thickness will vary with floor levels reducing room dimensions accordingly. Actual usable floor space may vary from the stated floor area. Measurements of rooms set forth on any floor plan are generally taken at the greatest points of each given room and center line of windows (as if the room were perfectly rectangular). Furniture is not included. Prices are subject to change without notice. E. & O. E. Plans not to scale. For more information on the method used for calculating the floor area of any unit, reference should be made to Builder Bulletin NO. 22 published by Tarion.

