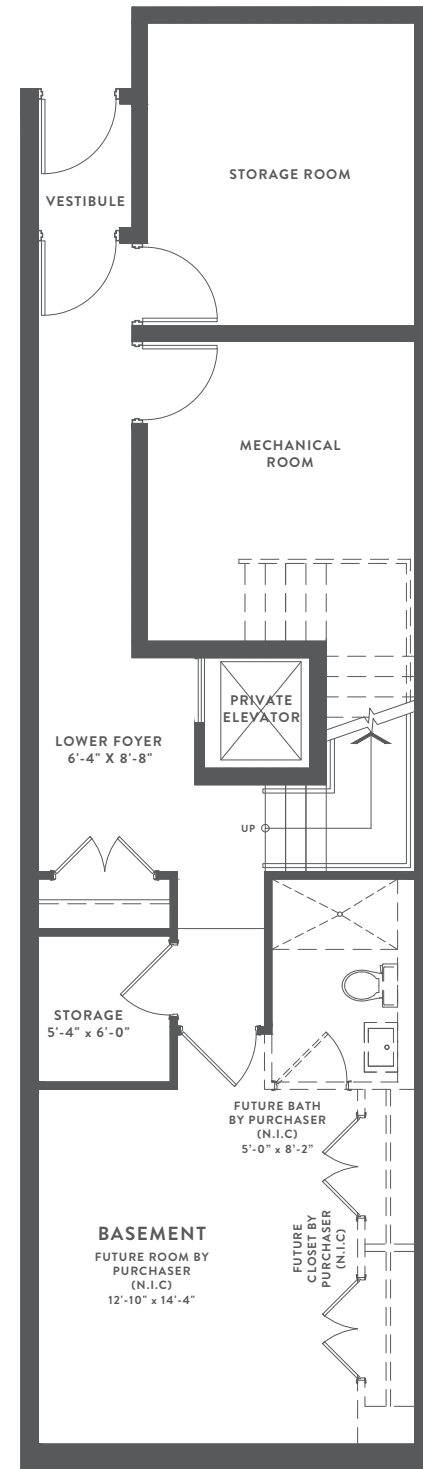


49 FOXBAR ROAD

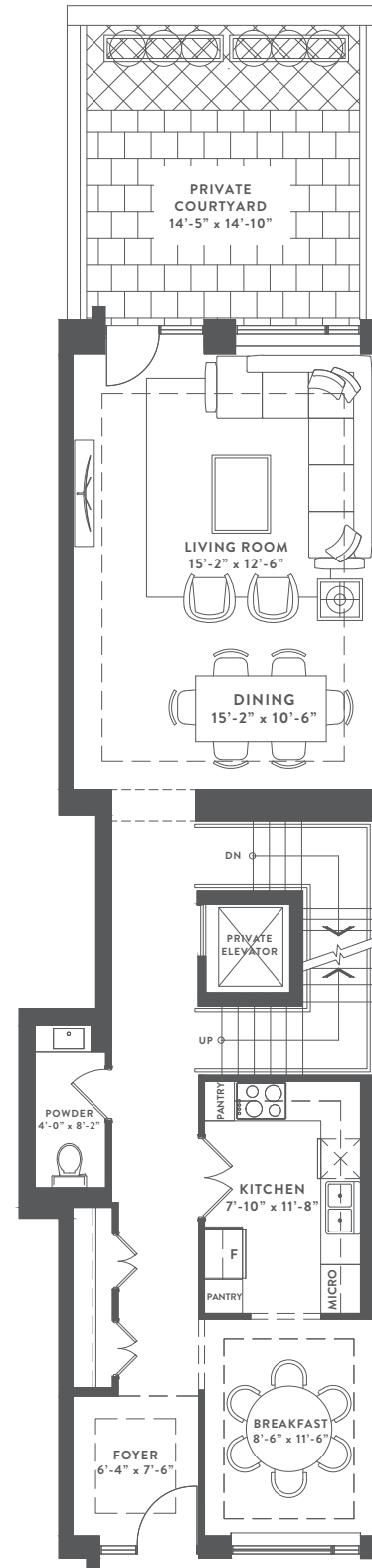
3 BEDROOM | 3 BATHROOM | BACKYARD TERRACE

3,145 SQ. FT.

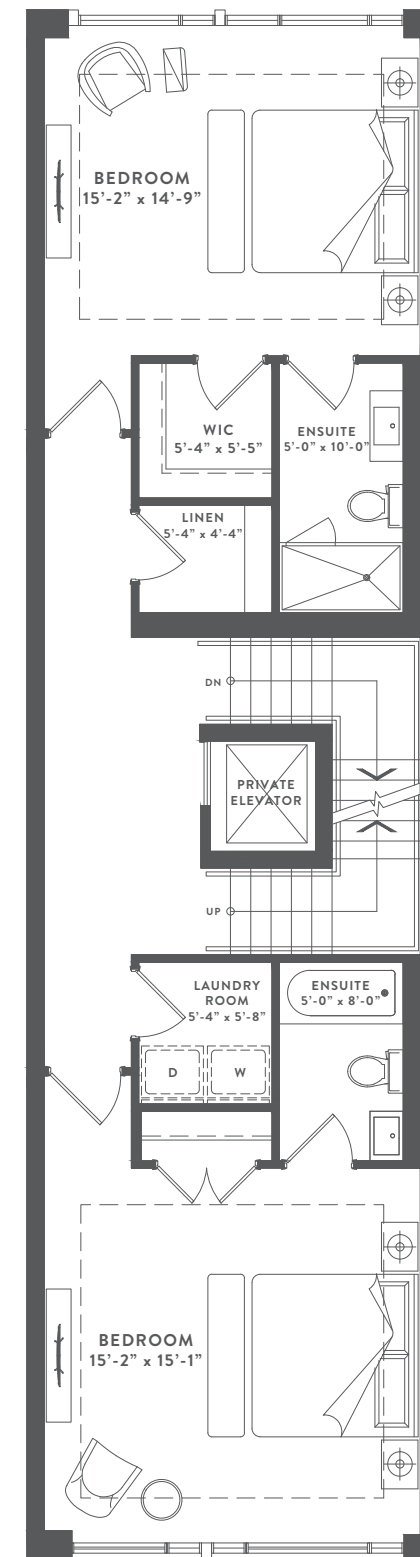
INCLUDING BASEMENT 290 SQ.FT.



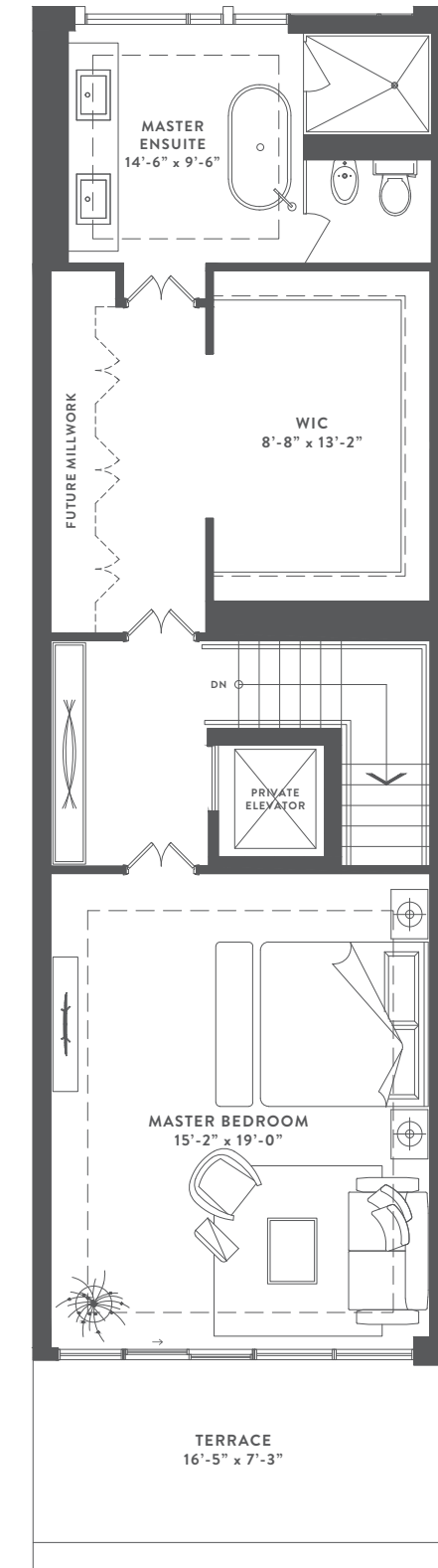
LOWER LEVEL
290 sq. ft.



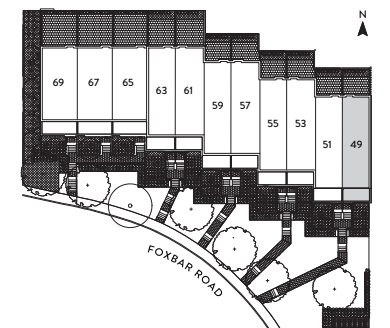
GROUND LEVEL
995 sq. ft.



SECOND LEVEL
995 sq. ft.



THIRD LEVEL
865 sq. ft.

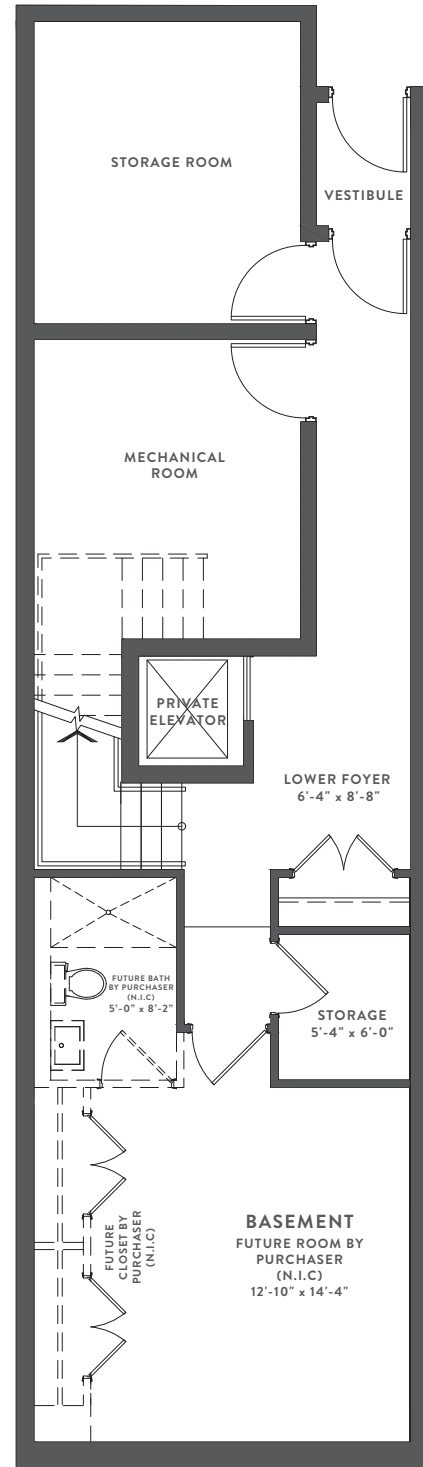


51 FOXBAR ROAD

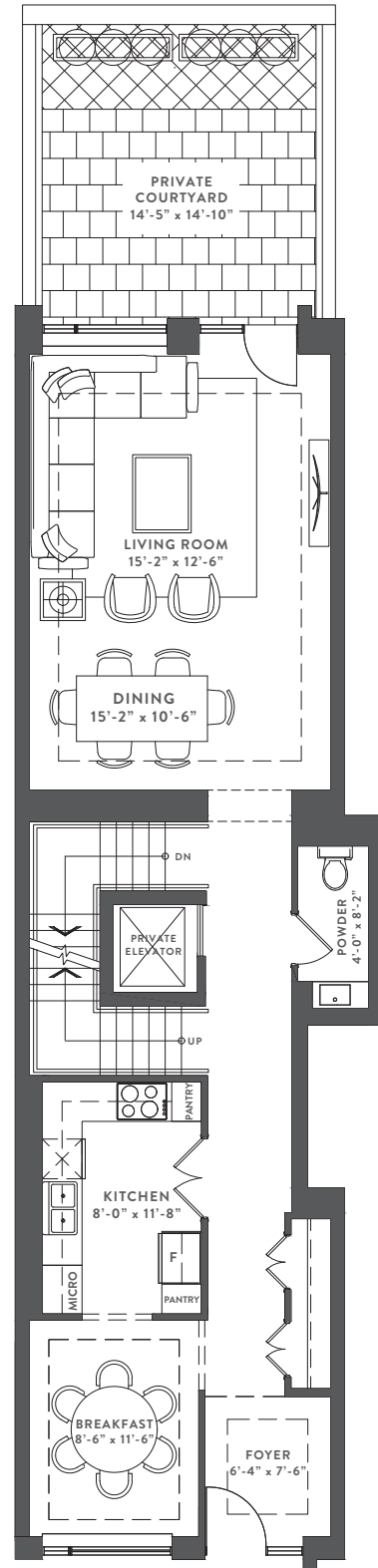
3 BEDROOM | 3 BATHROOM | BACKYARD TERRACE

3,145 SQ. FT.

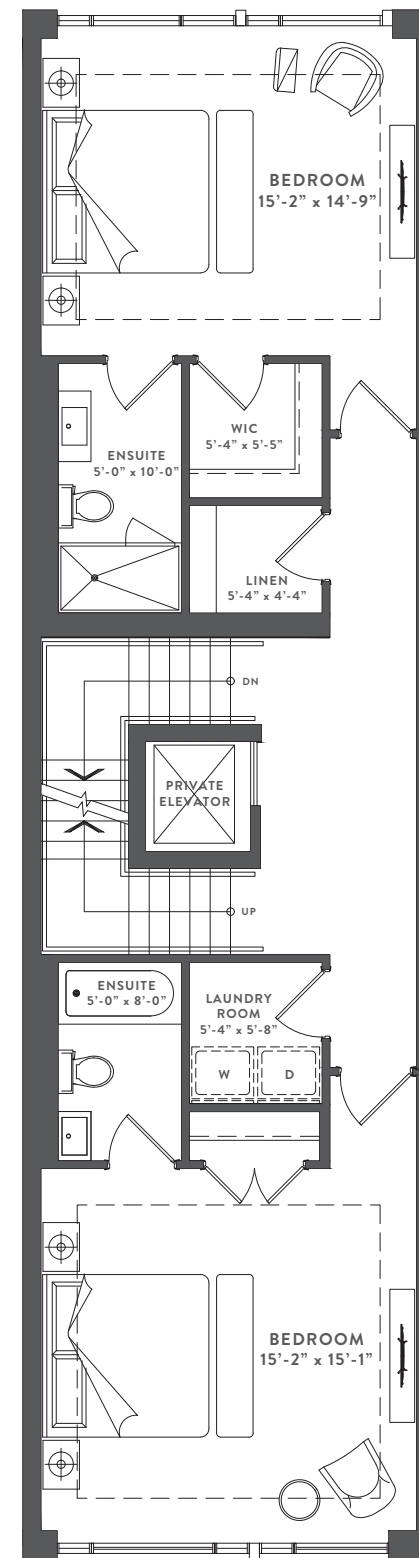
INCLUDING BASEMENT 290 SQ.FT.



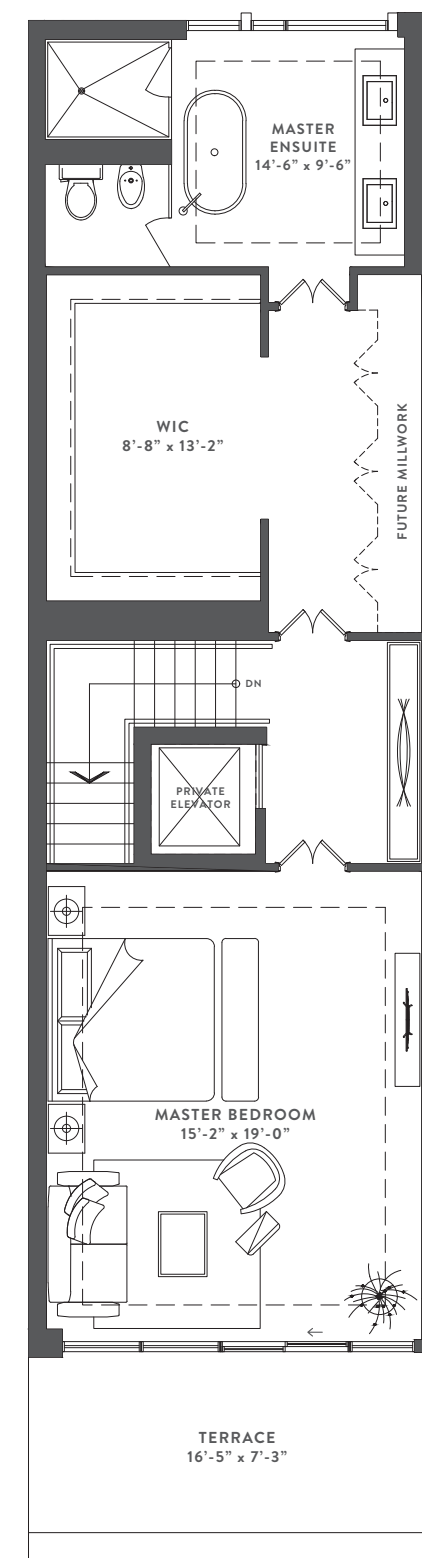
LOWER LEVEL
290 sq. ft.



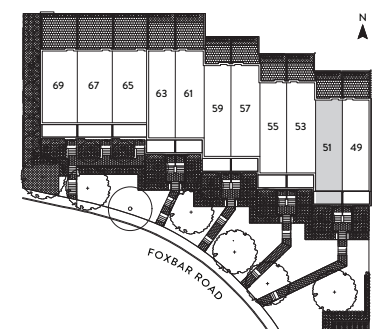
GROUND LEVEL
995 sq. ft.



SECOND LEVEL
995 sq. ft.



THIRD LEVEL
865 sq. ft.

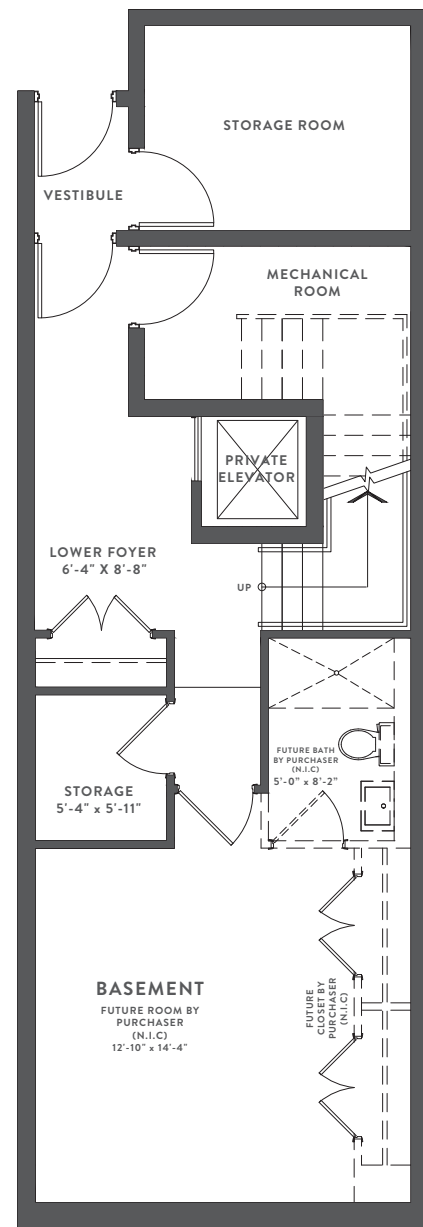


53 FOXBAR ROAD

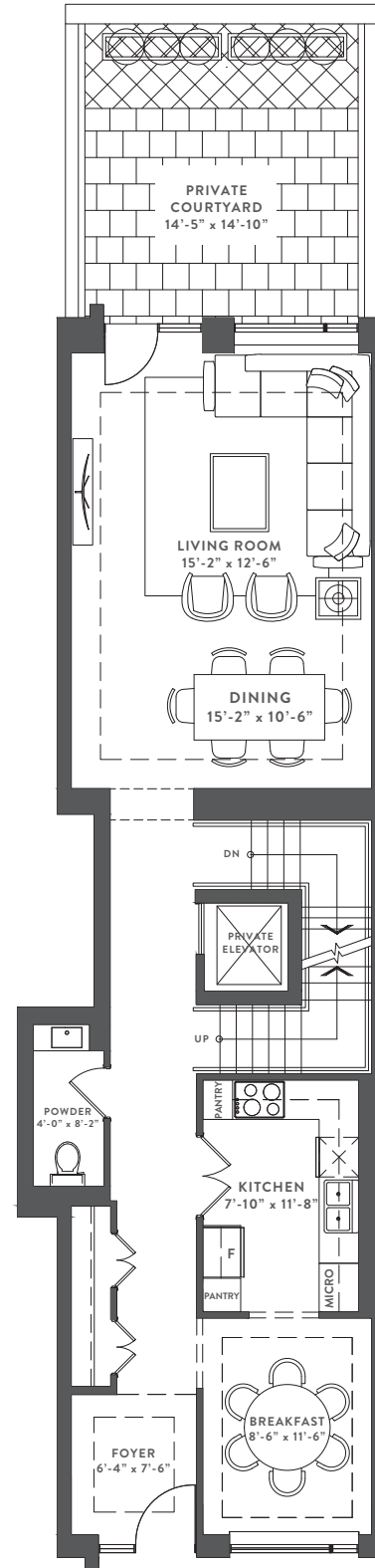
3 BEDROOM | 3 BATHROOM | BACKYARD TERRACE

3,095 SQ. FT.

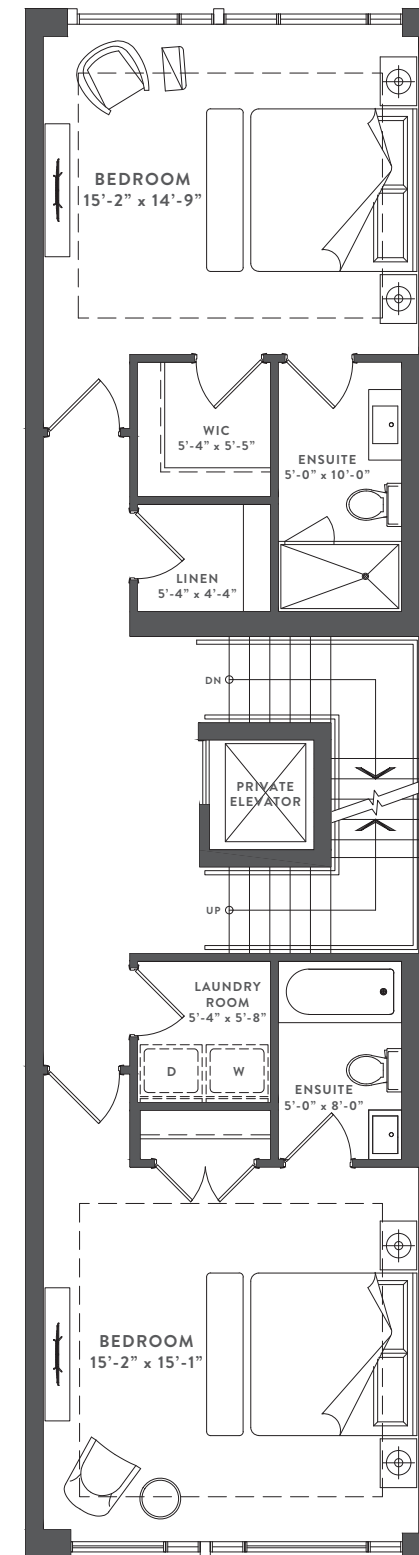
INCLUDING BASEMENT 240 SQ.FT.



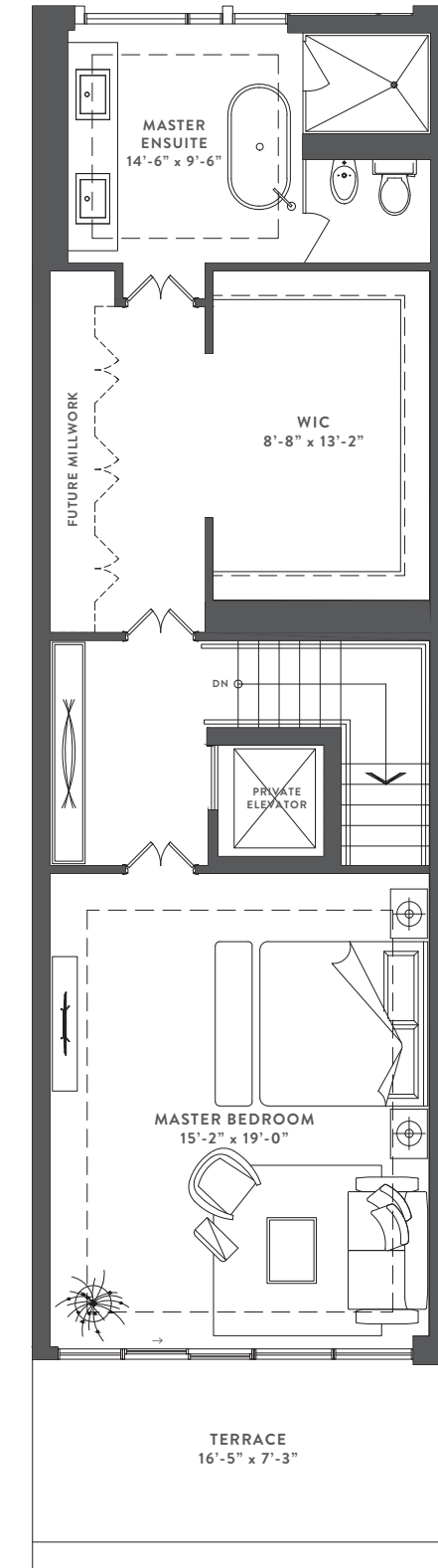
LOWER LEVEL
240 sq. ft.



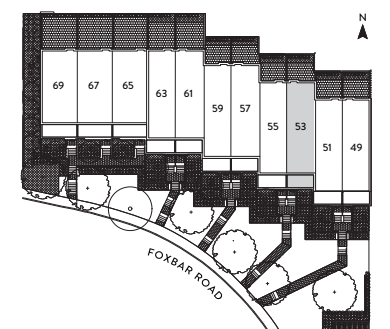
GROUND LEVEL
995 sq. ft.



SECOND LEVEL
995 sq. ft.



THIRD LEVEL
865 sq. ft.

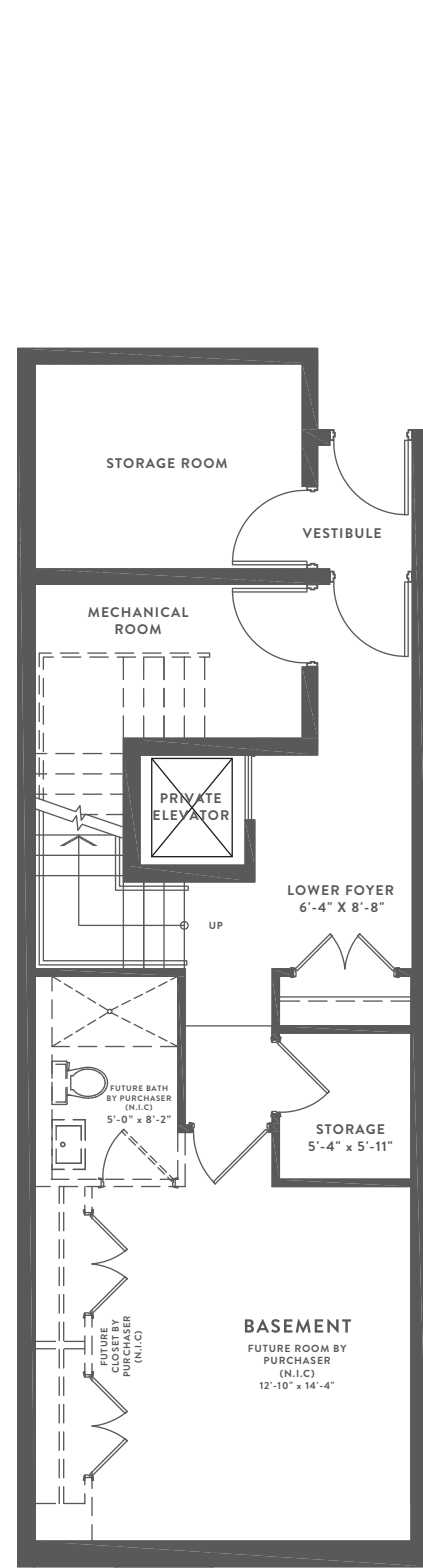


55 FOXBAR ROAD

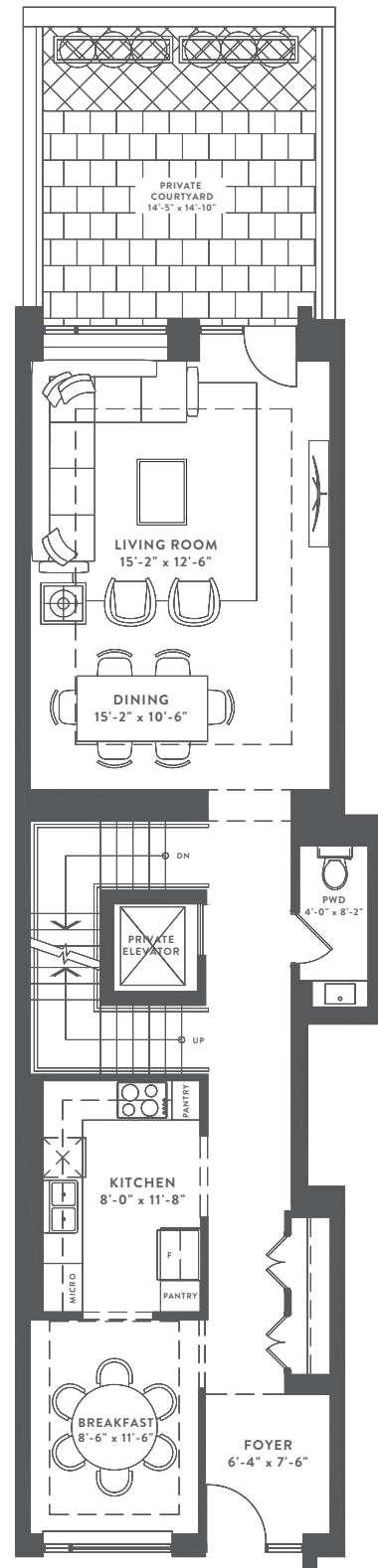
3 BEDROOM | 3 BATHROOM | BACKYARD TERRACE

3,095 SQ. FT.

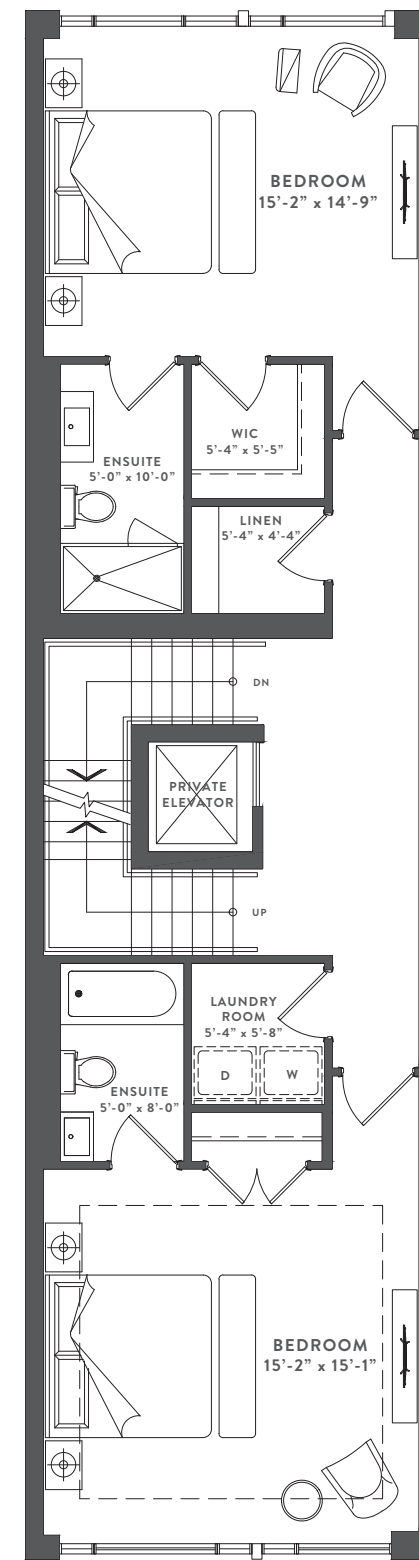
INCLUDING BASEMENT 240 SQ.FT.



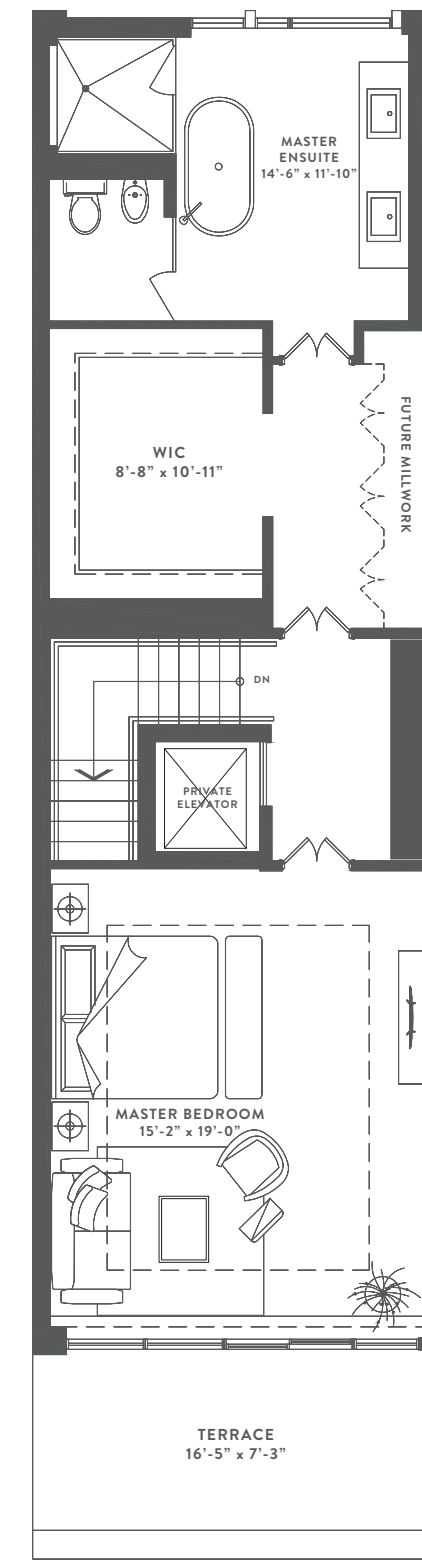
LOWER LEVEL
240 sq. ft.



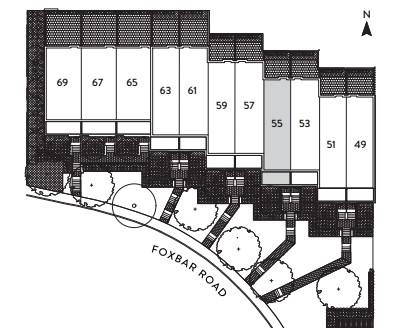
GROUND LEVEL
995 sq. ft.



SECOND LEVEL
995 sq. ft.



THIRD LEVEL
865 sq. ft.

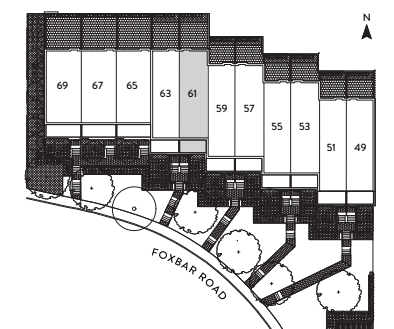
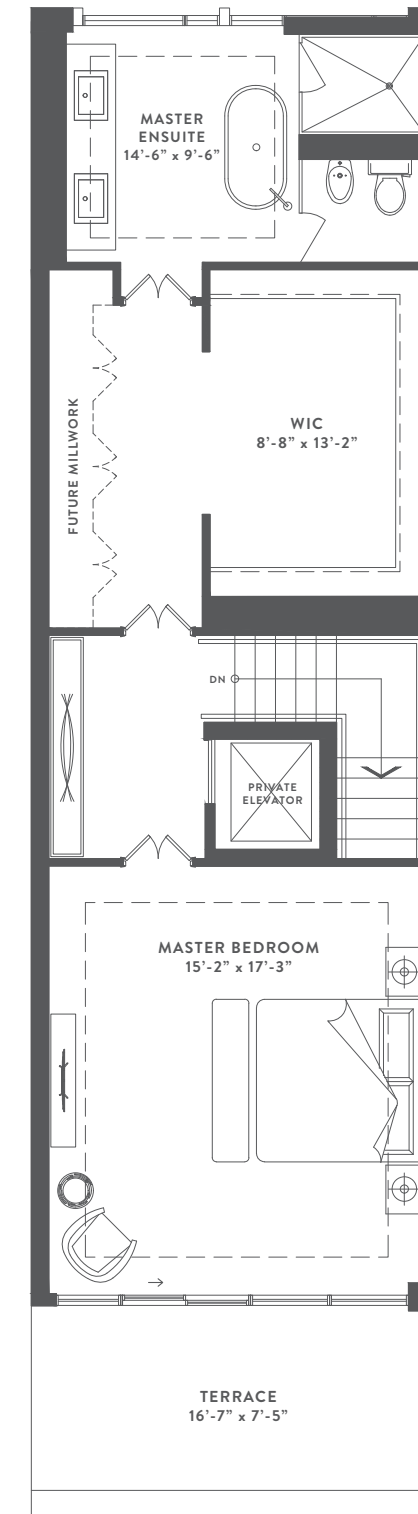
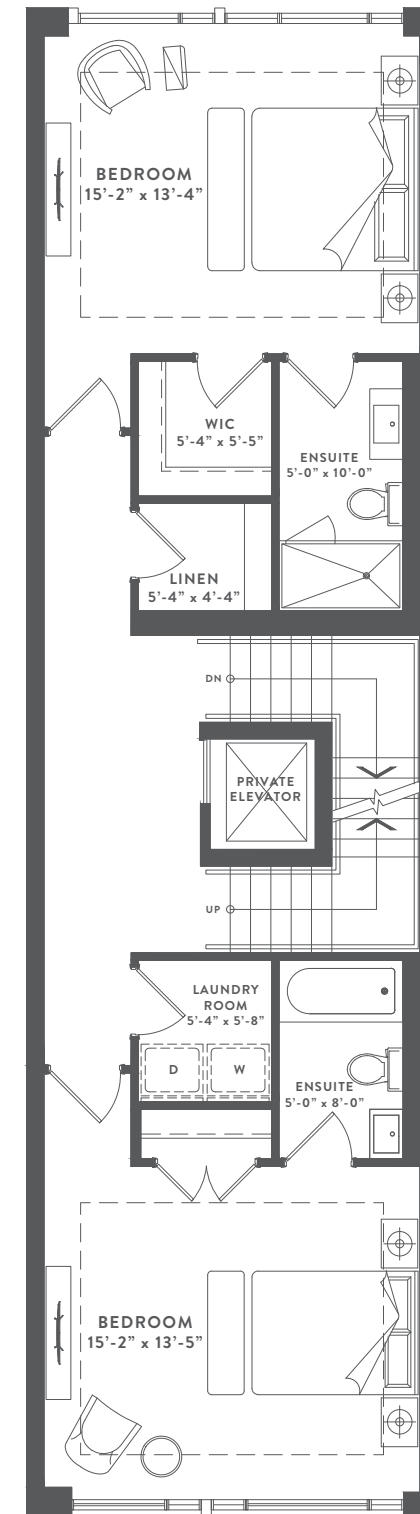
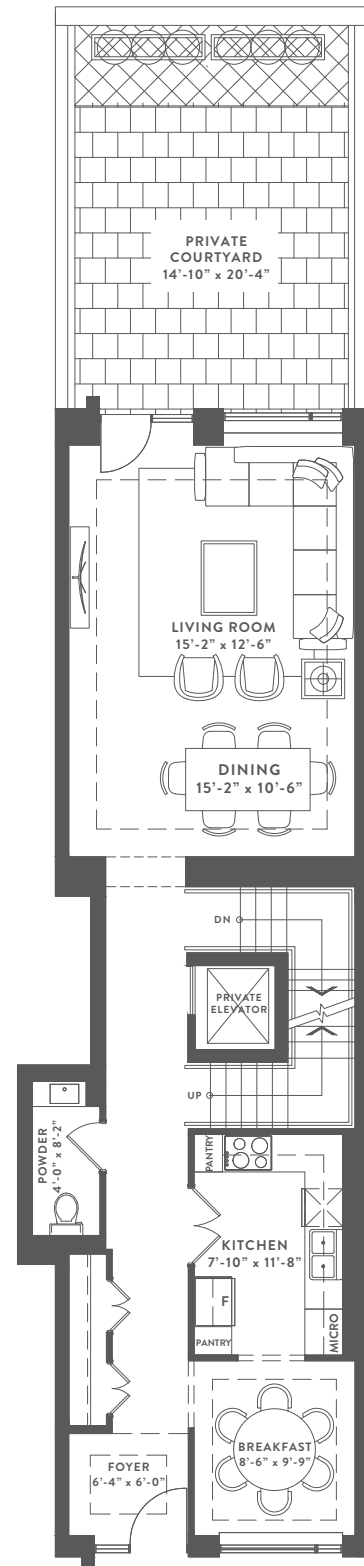
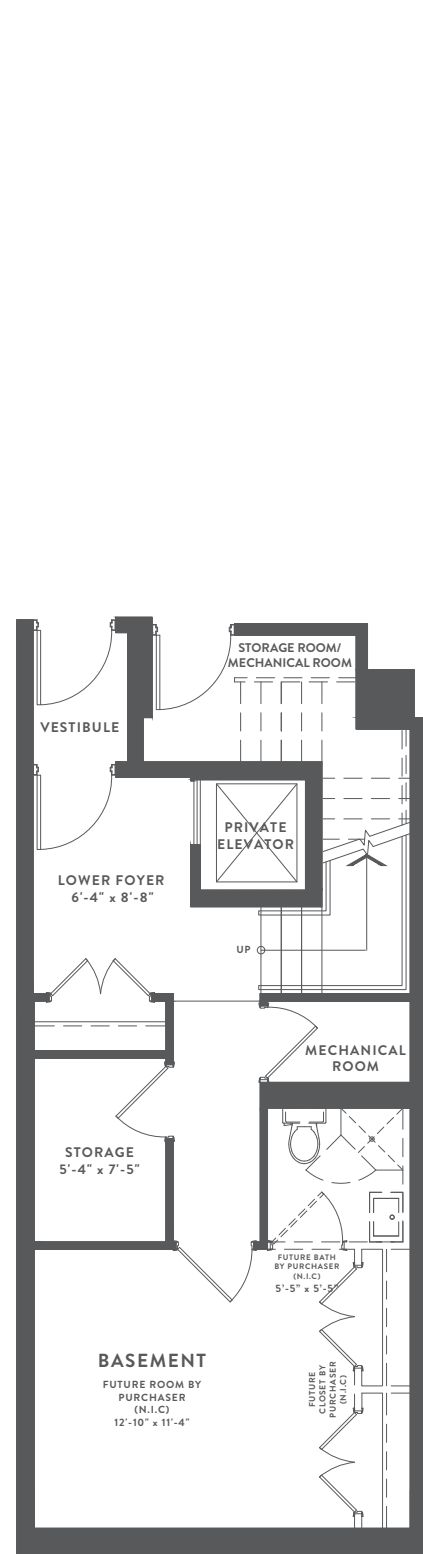


61 FOXBAR ROAD

3 BEDROOM | 3 BATHROOM | BACKYARD TERRACE

2,995 SQ. FT.

INCLUDING BASEMENT 220 SQ.FT.



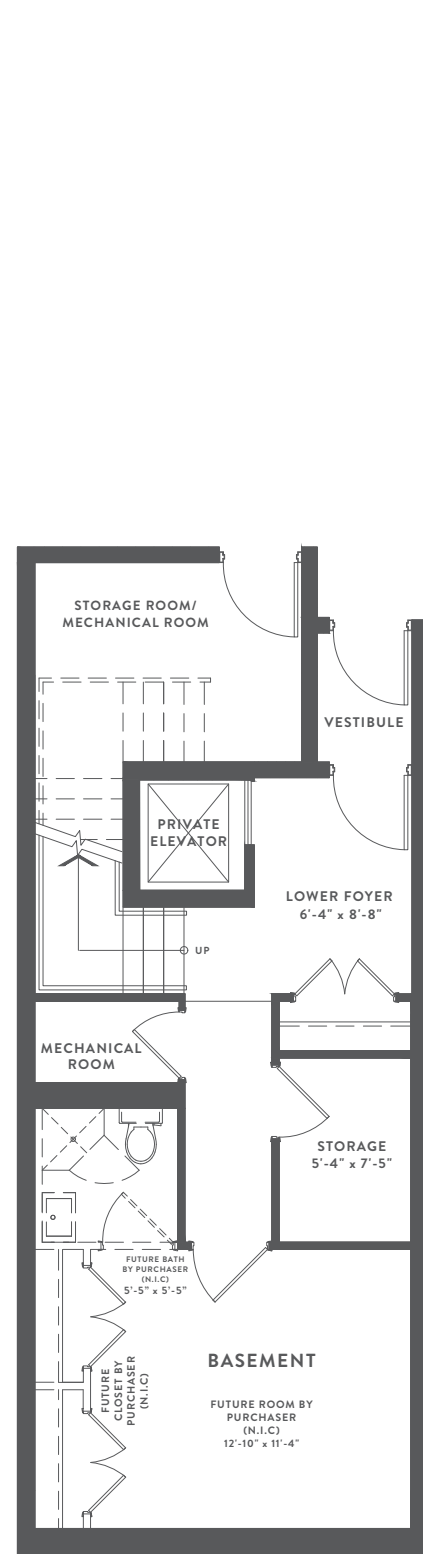
Municipal address, dimensions, specifications, layouts (including tile patterns), window sizes, mullions, fixture representation, appliance locations, and materials are approximate only, may vary, and are subject to changes without notice as provided in the Agreement of Purchase and Sale. Plans may be reversed. Wall thickness will vary with floor levels reducing room dimensions accordingly. Furniture is not included. Prices are subject to change without notice. E. & O. E. Plans not to scale. For more information on the method used for calculating the floor area of any unit, reference should be made to Builder Bulletin No. 22 published by Tarion.

63 FOXBAR ROAD

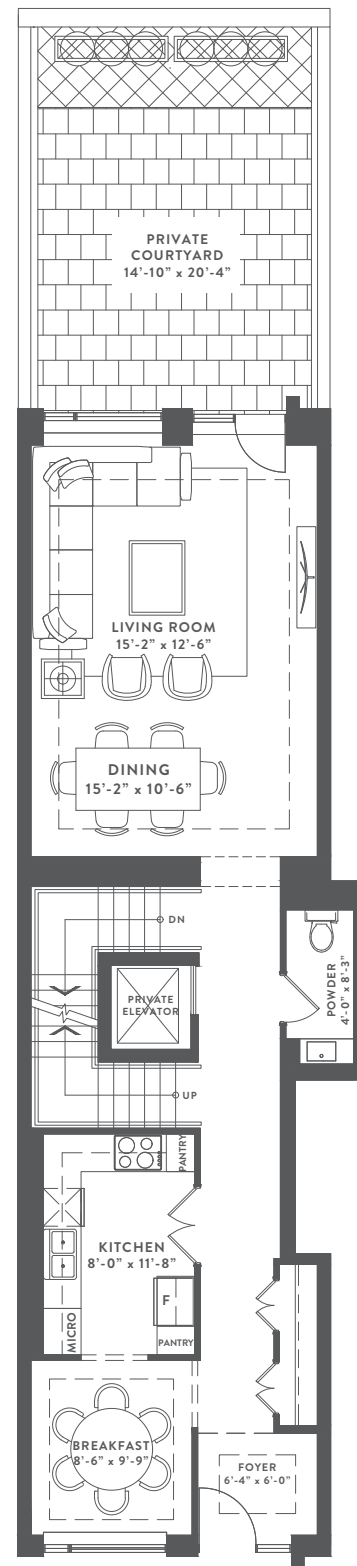
3 BEDROOM | 3 BATHROOM | BACKYARD TERRACE

2,995 SQ. FT.

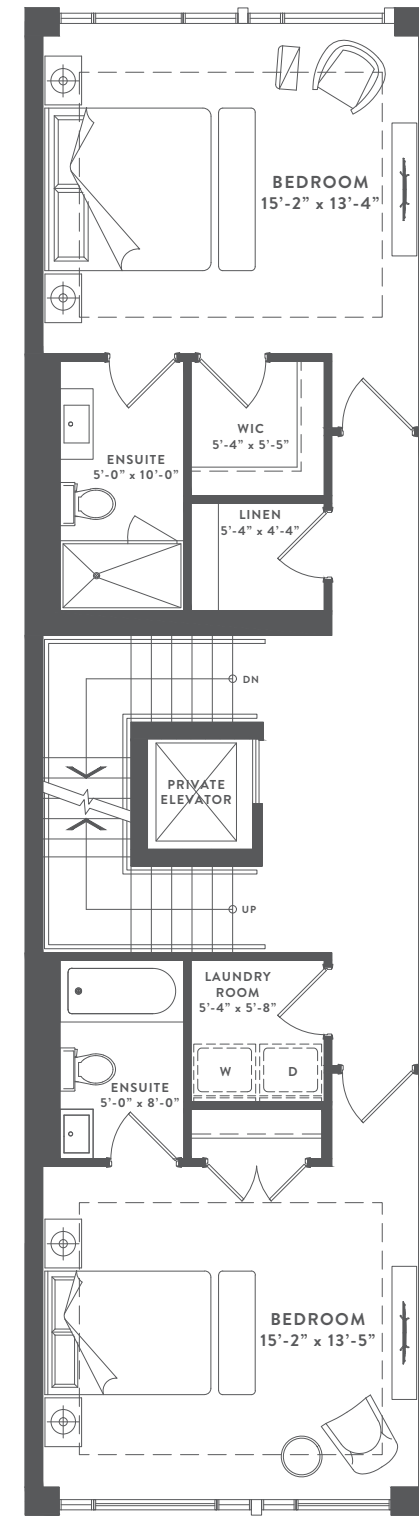
INCLUDING BASEMENT 220 SQ.FT.



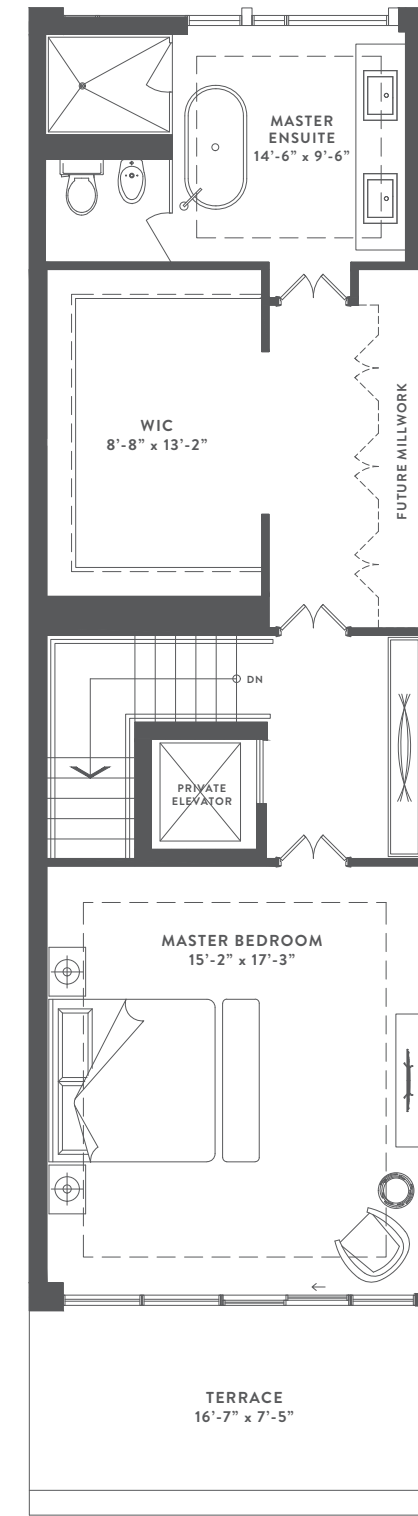
LOWER LEVEL
220 sq. ft.



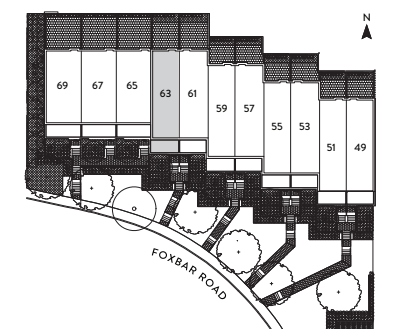
GROUND LEVEL
970 sq. ft.



SECOND LEVEL
970 sq. ft.



THIRD LEVEL
835 sq. ft.



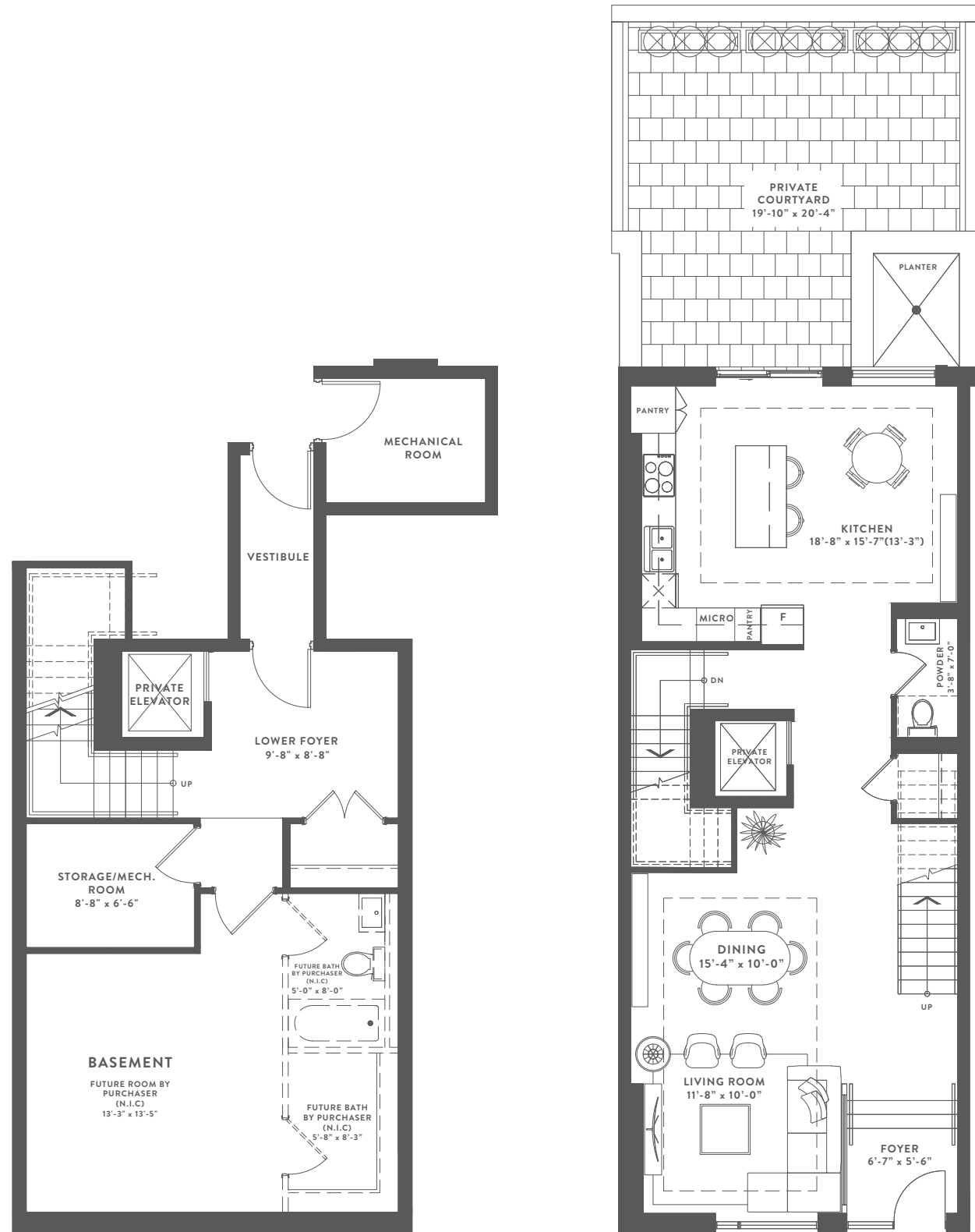
Municipal address, dimensions, specifications, layouts (including tile patterns), window sizes, mullions, fixture representation, appliance locations, and materials are approximate only, may vary, and are subject to changes without notice as provided in the Agreement of Purchase and Sale. Plans may be reversed. Wall thickness will vary with floor levels reducing room dimensions accordingly. Furniture is not included. Prices are subject to change without notice. E. & O. E. Plans not to scale. For more information on the method used for calculating the floor area of any unit, reference should be made to Builder Bulletin No. 22 published by Tarion.

67 FOXBAR ROAD

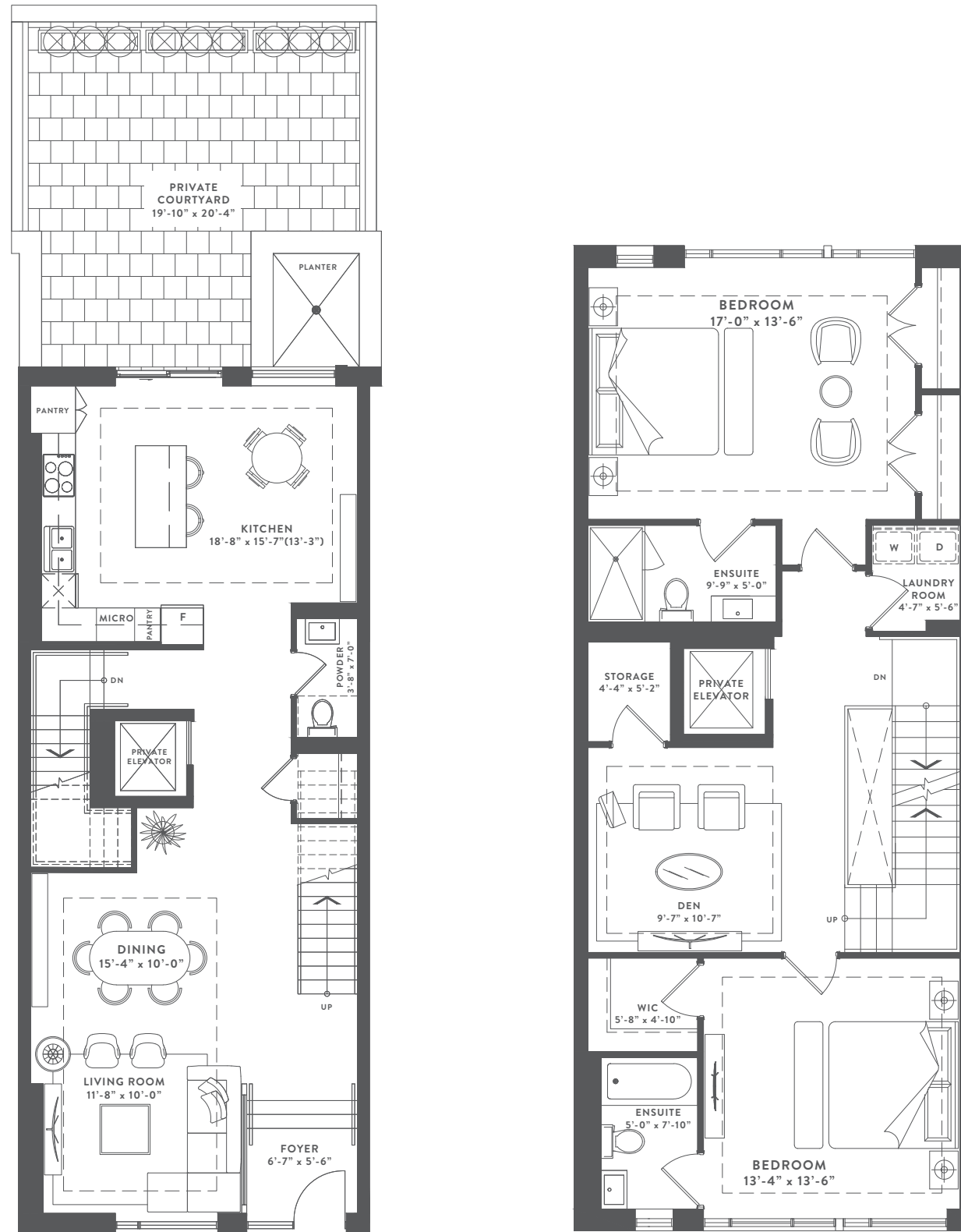
3 BEDROOM | 3 BATHROOM | BACKYARD TERRACE

3,160 SQ. FT.

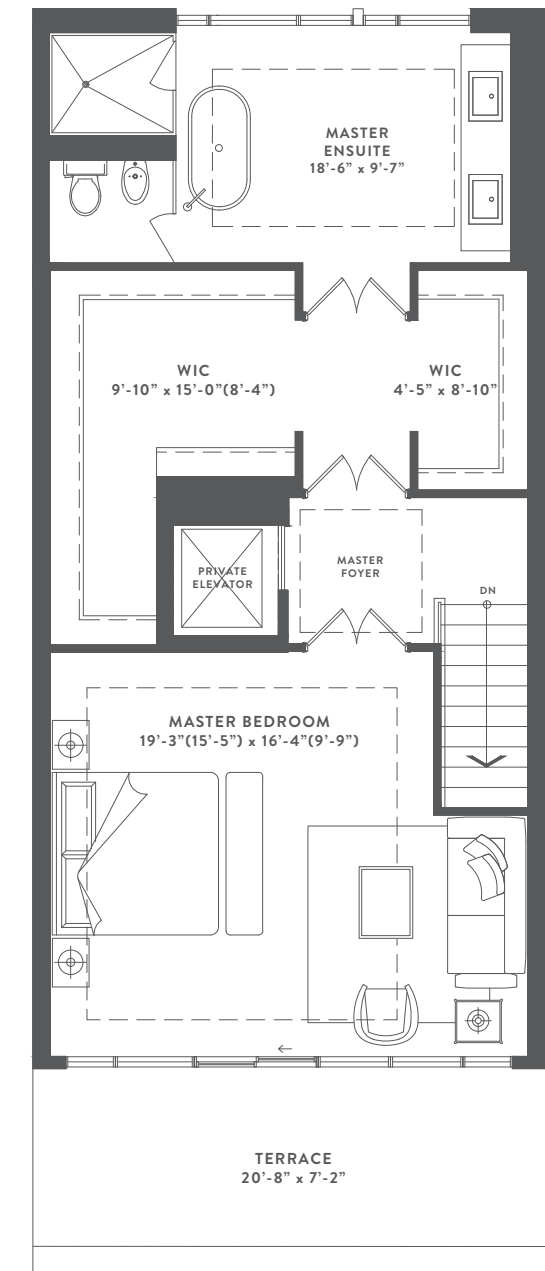
INCLUDING BASEMENT 265 SQ.FT.



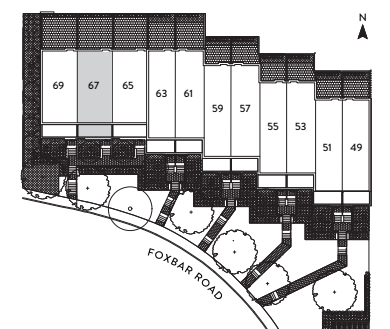
LOWER LEVEL
265 sq. ft.



SECOND LEVEL
1020 sq. ft.



THIRD LEVEL
855 sq. ft.



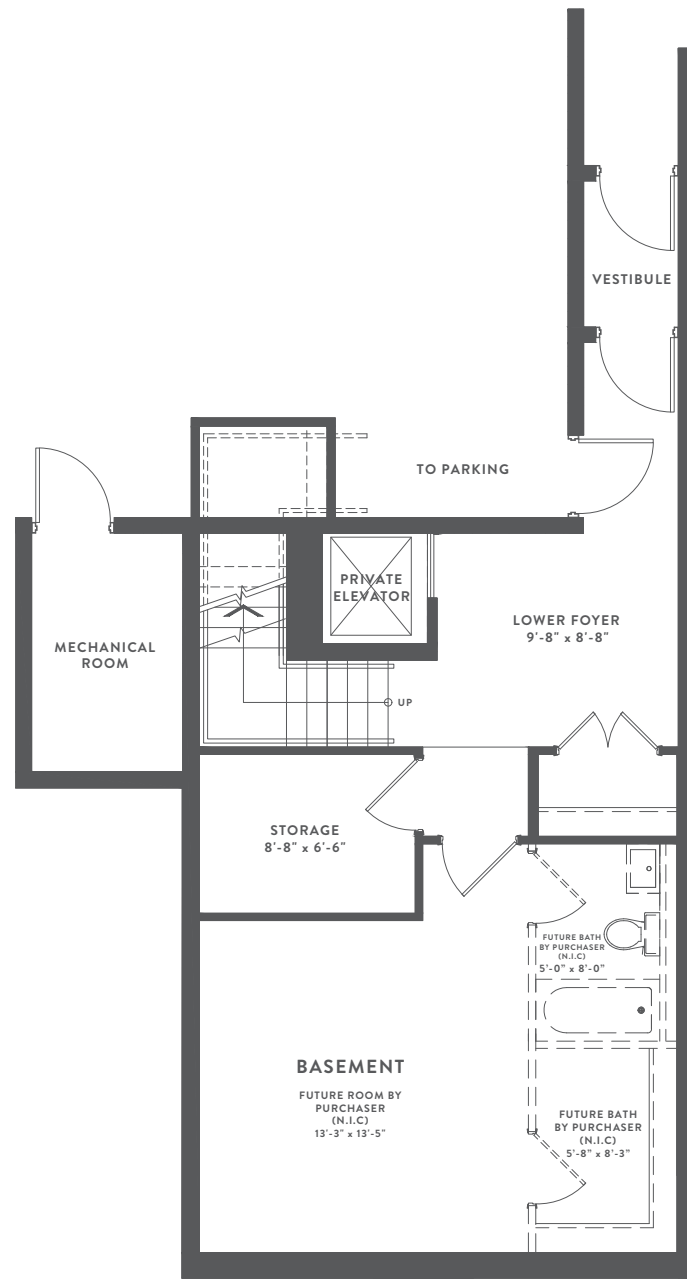
Municipal address, dimensions, specifications, layouts (including tile patterns), window sizes, mullions, fixture representation, appliance locations, and materials are approximate only, may vary, and are subject to changes without notice as provided in the Agreement of Purchase and Sale. Plans may be reversed. Wall thickness will vary with floor levels reducing room dimensions accordingly. Furniture is not included. Prices are subject to change without notice. E. & O. E. Plans not to scale. For more information on the method used for calculating the floor area of any unit, reference should be made to Builder Bulletin No. 22 published by Tarion.

69 FOXBAR ROAD

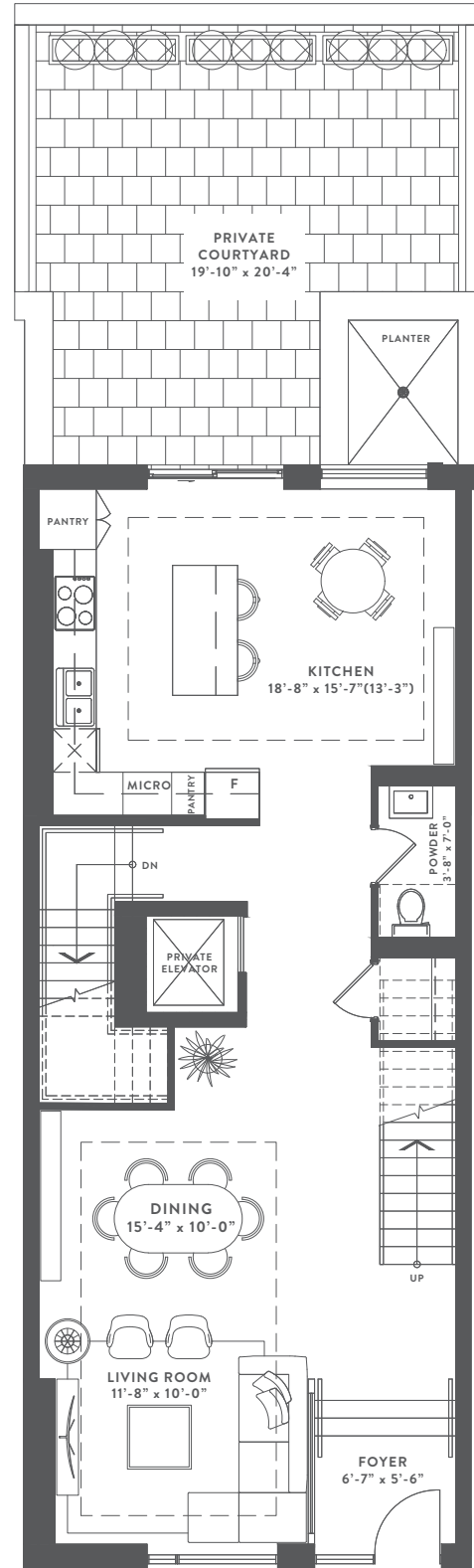
3 BEDROOM | 3 BATHROOM | BACKYARD TERRACE

3,160 SQ. FT.

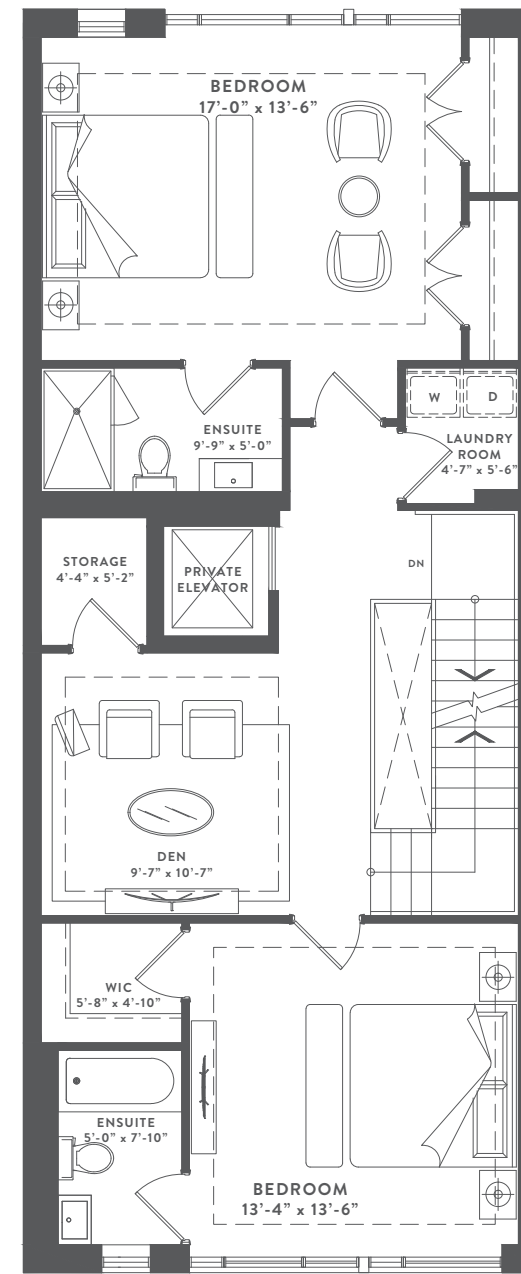
INCLUDING BASEMENT 265 SQ.FT.



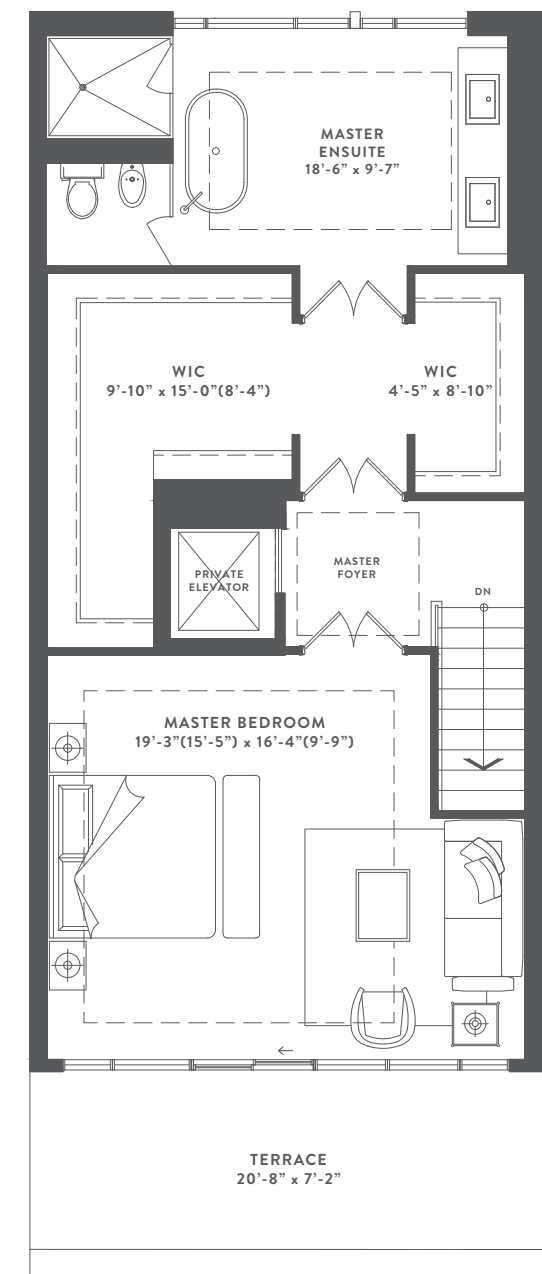
LOWER LEVEL
265 sq. ft.



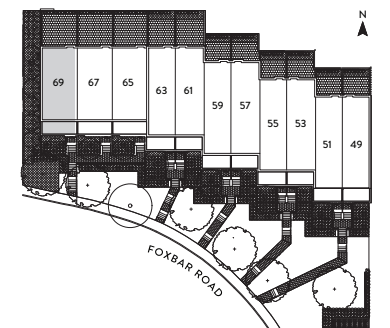
GROUND LEVEL
1020 sq. ft.



SECOND LEVEL
1020 sq. ft.

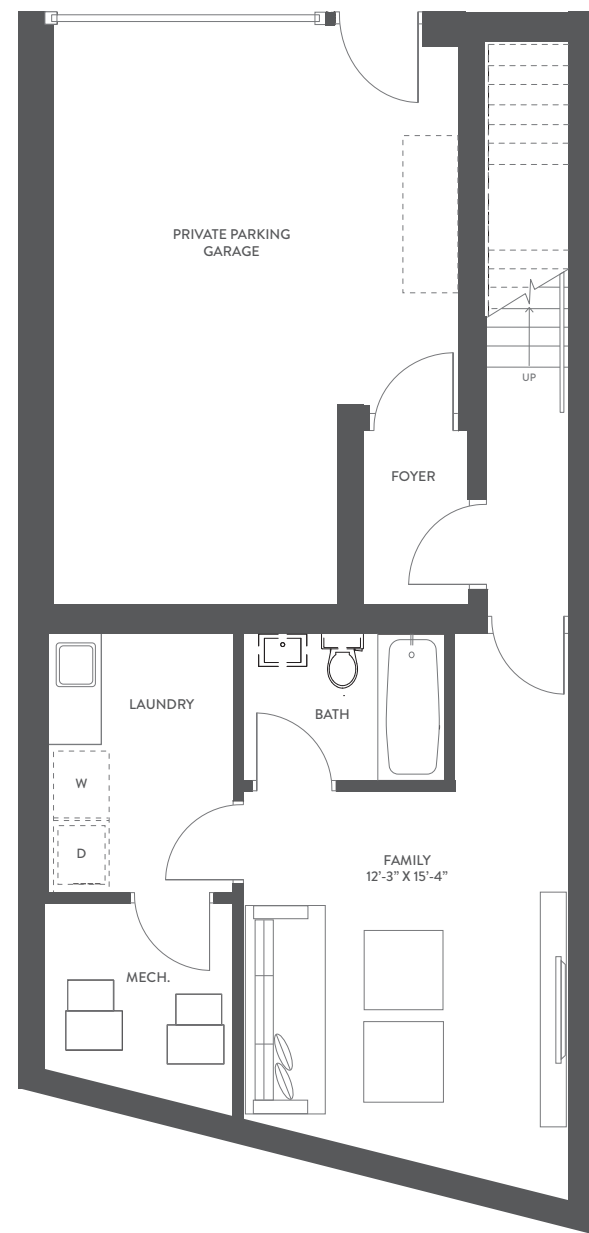


THIRD LEVEL
855 sq. ft.

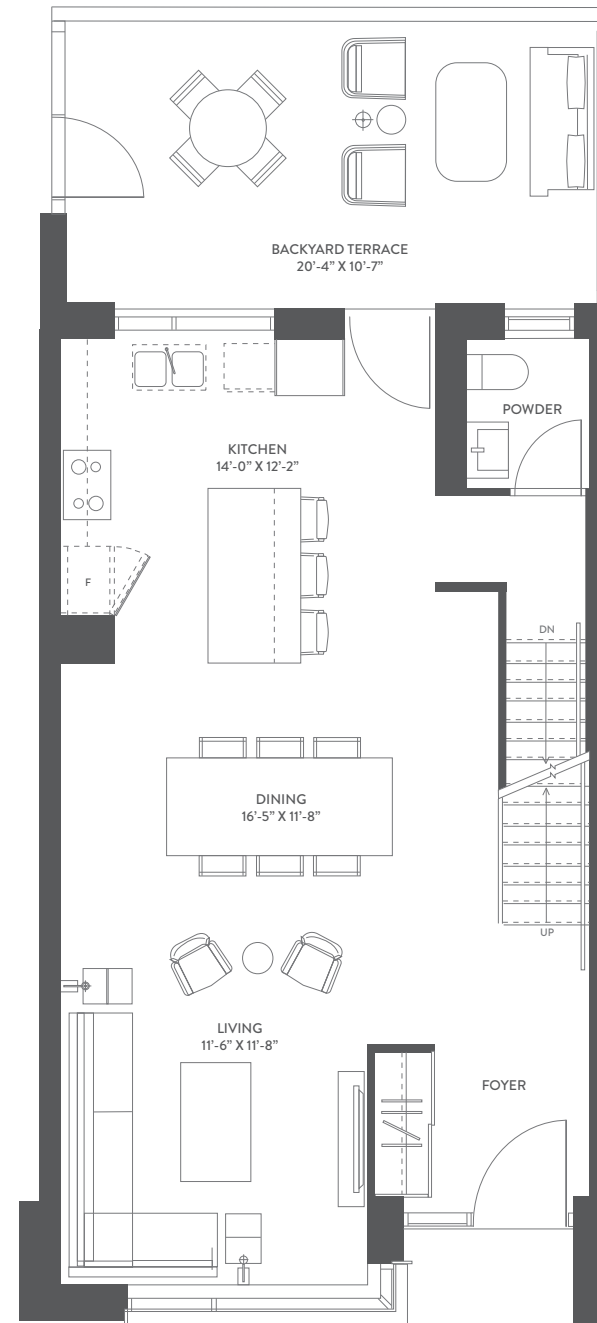


79 FOXBAR ROAD

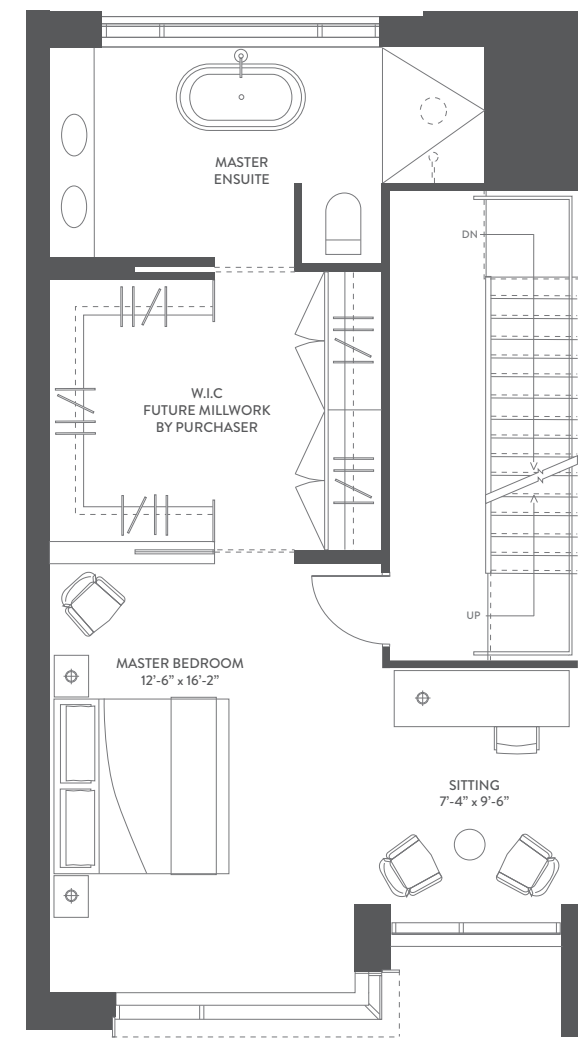
3 BEDROOM | BACKYARD TERRACE
2,905 SQ. FT.



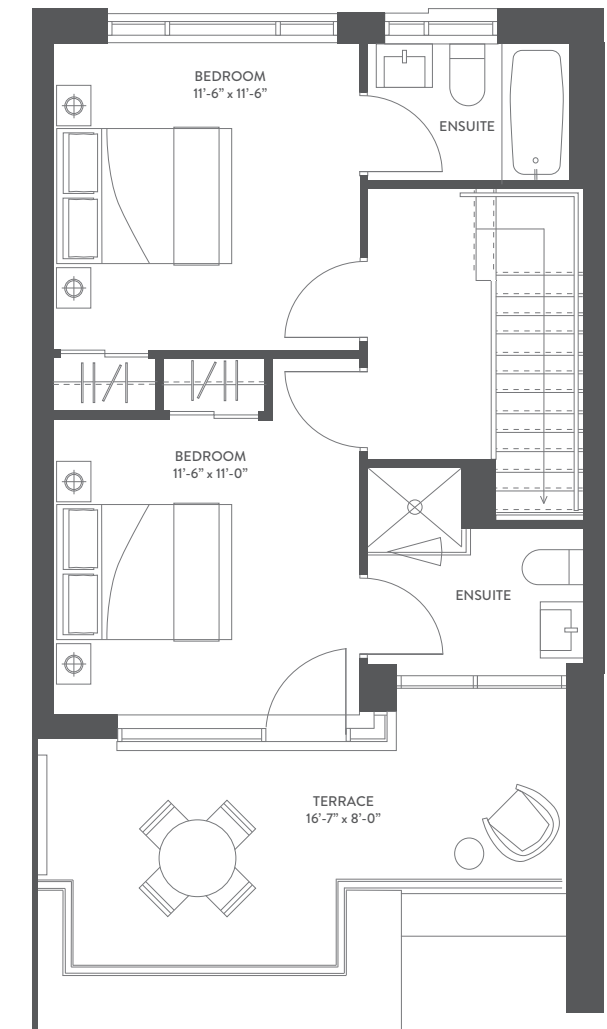
LOWER LEVEL
780 sq. ft.



GROUND LEVEL
780 sq. ft.



SECOND LEVEL
770 sq. ft.



THIRD LEVEL
575 sq. ft.



EST 1976

Dimensions, specifications, layouts (including but not limited to tile patterns), window sizes, mullions, fixture representation, appliance and fixture locations, and materials are approximate only, may vary, and are subject to changes without notice as provided in the Agreement of Purchase and Sale. Plans may be reversed. Wall thickness will vary with floor levels reducing room dimensions accordingly. Actual usable floor space may vary from the stated floor area. Measurements of rooms set forth on any floor plan are generally taken at the greatest points of each given room and center line of windows (as if the room were perfectly rectangular). Furniture is not included. Prices are subject to change without notice. E. & O. E. Plans not to scale. For more information on the method used for calculating the floor area of any unit, reference should be made to Builder Bulletin NO. 22 published by Tarion.

